

6553 East Baywood Avenue, Mesa

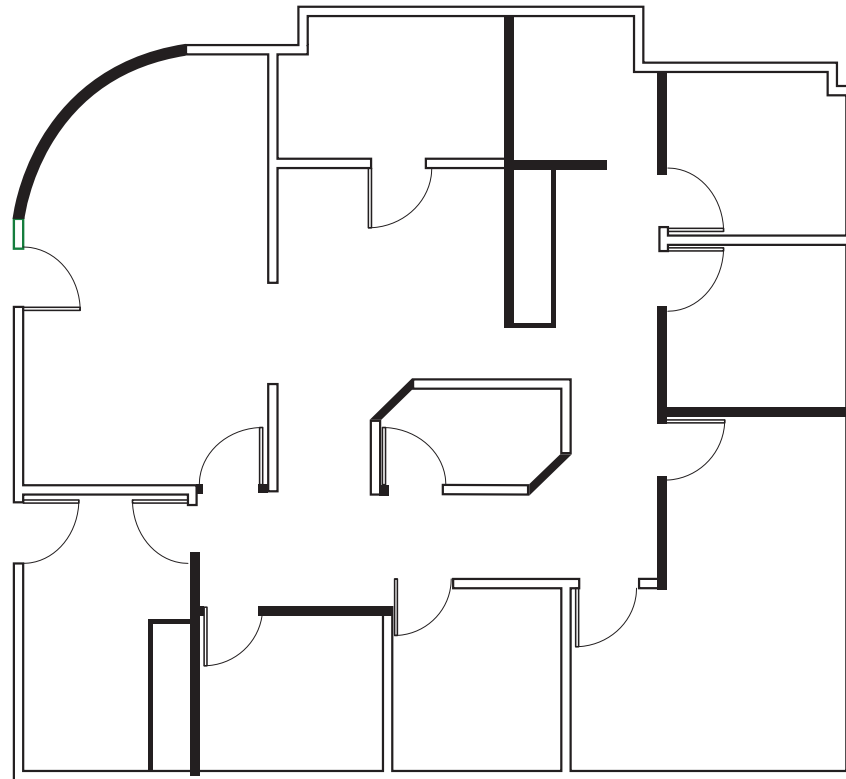
# BAYWOOD

HEALTH CENTER

6550 East Broadway Road, Mesa

## NORTH BUILDING

Suite 207: ±2,024 SF



### For More Information, Please Contact:

**Vince Femiano**

Senior Vice President  
602.954.7559  
vince.femiano@transwestern.com

**Kate Morris**

Senior Vice President  
602.296.6369  
kate.morris@transwestern.com

**Kevin Smigiel**

Vice President  
602.265.5502  
kevin.smigiel@transwestern.com



2501 East Camelback Road, Suite 1  
Phoenix, Arizona 85016  
T 602.956.5000 F 602.956.5333  
www.transwestern.com

6553 East Baywood Avenue, Mesa

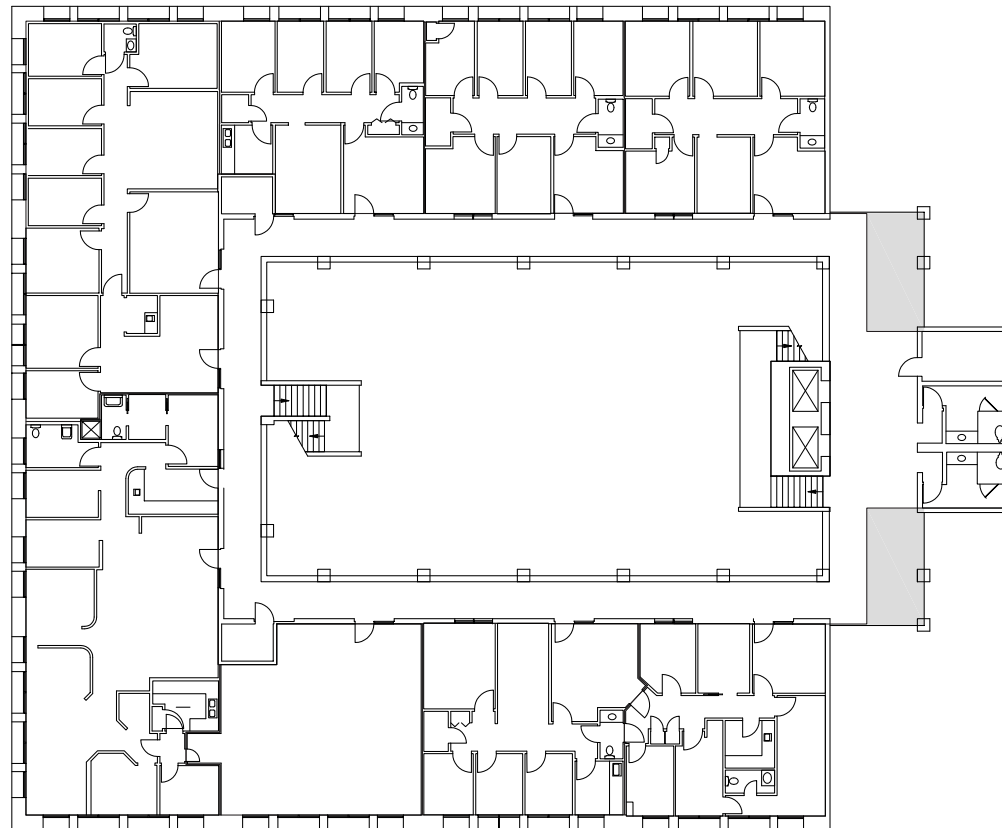
# BAYWOOD

HEALTH CENTER

6550 East Broadway Road, Mesa

## SOUTH BUILDING

Second Floor: ±12,649 SF  
Divisible



### For More Information, Please Contact:

**Vince Femiano**

Senior Vice President  
602.954.7559  
vince.femiano@transwestern.com

**Kate Morris**

Senior Vice President  
602.296.6369  
kate.morris@transwestern.com

**Kevin Smigiel**

Vice President  
602.265.5502  
kevin.smigiel@transwestern.com



2501 East Camelback Road, Suite 1  
Phoenix, Arizona 85016  
T 602.956.5000 F 602.956.5333  
www.transwestern.com