



9250 WEST THOMAS ROAD, PHOENIX, AZ 85037

[illegible]

Floor plan of Suite 320, available 1/1/2026. The plan shows a large blue area labeled 'SUITE 320 AVAILABLE 1/1/2026' and several smaller grey areas.

Kevin Smigiel
602.265.5502
kevin.smigiel@transwestern.com

2501 E Camelback Rd, Ste 1
Phoenix, AZ 85016
transwestern.com

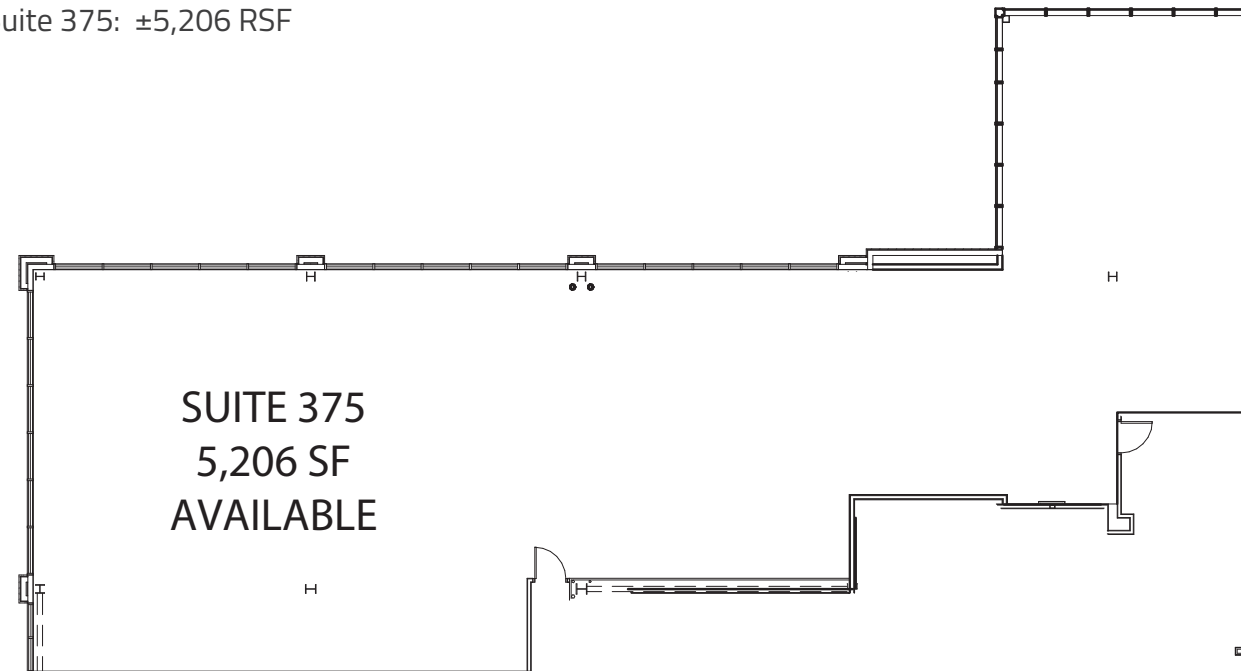
The information provided herein was obtained from sources believed reliable; however, Transwestern makes no guarantees, warranties or representations as to the completeness of accuracy thereof. The presentation of this property is submitted subject to errors, omissions, change of price or conditions, prior to sale or lease, or withdrawal without notice. Copyright © 2025 Transwestern.



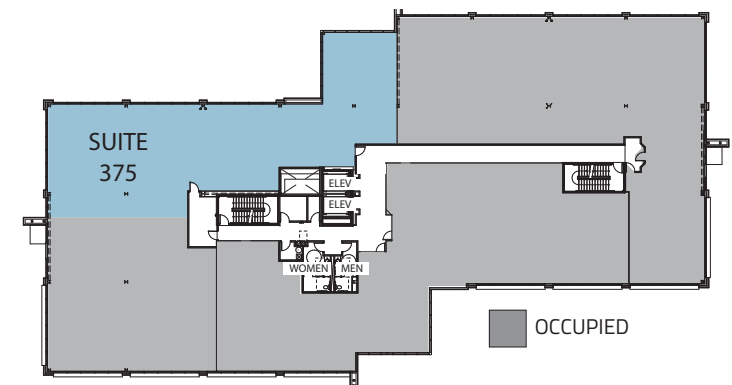
ESTRELLA HEALTH CENTER

MEDICAL SPACE FOR LEASE
9250 WEST THOMAS ROAD, PHOENIX, AZ 85037

Suite 375: ±5,206 RSF



THIRD FLOOR - KEY PLAN



Leasing Information:

Vince Femiano

602.954.7559

vince.femiano@transwestern.com

Kate Morris

602.296.6369

kate.morris@transwestern.com

Kevin Smigiel

602.265.5502

kevin.smigiel@transwestern.com

TRANSWESTERN REAL ESTATE SERVICES

2501 E Camelback Rd, Ste 1

Phoenix, AZ 85016

transwestern.com

The information provided herein was obtained from sources believed reliable; however, Transwestern makes no guarantees, warranties or representations as to the completeness of accuracy thereof. The presentation of this property is submitted subject to errors, omissions, change of price or conditions, prior to sale or lease, or withdrawal without notice. Copyright © 2025 Transwestern.