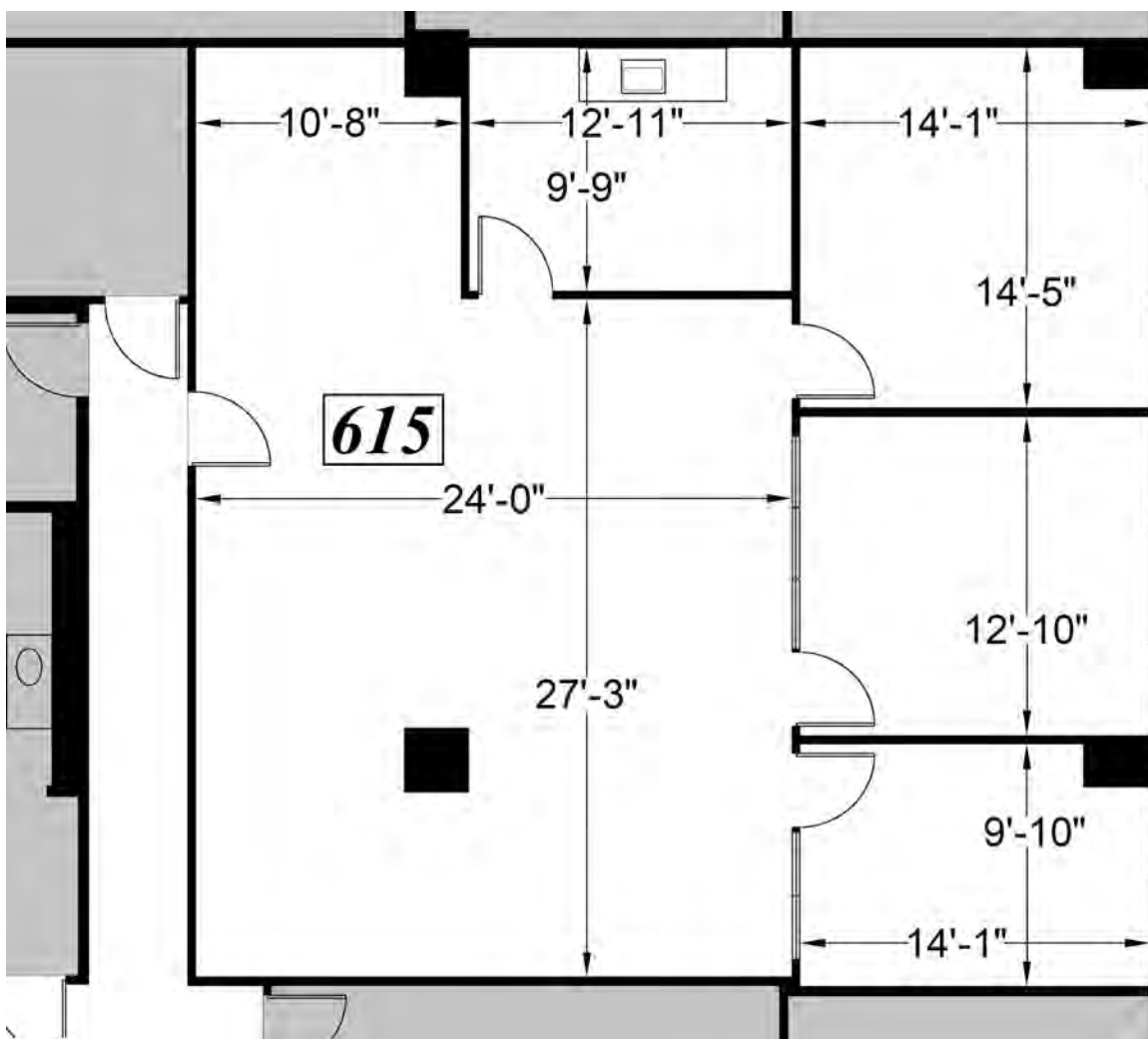


**CLASS A OFFICE SPACE FOR LEASE | GOLDEN WEST TOWER BUILDING**

1970 Broadway, Oakland, CA



THE TOWER BUILDING  
1970 BROADWAY



SITE LOCATION MAP

FLOOR  
LOCATION



6TH FLOOR KEY PLAN

*Plans not to scale*

**Suite 615: ±1,802 RSF**

**\$3.75/RSF/Month, FSG**

**AVAILABLE NOW**

**LEASING INFORMATION**

**Bob Maderious**  
Senior Vice President  
925.357.2010  
bob.maderious@transwestern.com  
LIC 00616136

[www.1970Broadway.com](http://www.1970Broadway.com)

2175 N. California Blvd, Suite 415  
Walnut Creek, CA 94596

**CA BROKERAGE LIC 01263636**  
T 925.357.2000 F 925.357.2001

[www.transwestern.com](http://www.transwestern.com)

The information provided herein was obtained from sources believed reliable; however, Transwestern makes no guarantees, warranties or representations as to the completeness or accuracy thereof. The presentation of this property is submitted subject to errors, omissions, change of price or conditions, prior sale or lease, or withdrawal without notice. Copyright © 2023 Transwestern.

