

# ANTHEM CORPORATE

3715 W Anthem Way, Anthem, AZ

  
TRANSWESTERN  
REAL ESTATE  
SERVICES



## Office and Medical Space Available

PLEASE CONTACT YOUR EXCLUSIVE ADVISORS FOR MORE INFORMATION

**KATHLEEN MORGAN** • Senior Vice President • T 602-809-1048 •  
Kathleen.Morgan@transwestern.com

**KEVIN SMIGIEL** • Vice President • T 602-550-9295 •  
Kevin.Smigiel@transwestern.com

# Anthem Corporate

3715 W Anthem Way, Anthem, AZ 85086



\$30.00

Full Service With Base  
Year Operating Expenses



64,473 SF

Building Size



3%

Annual Increases



4.40:1,000/SF

Parking Ratio



2008

Year Built



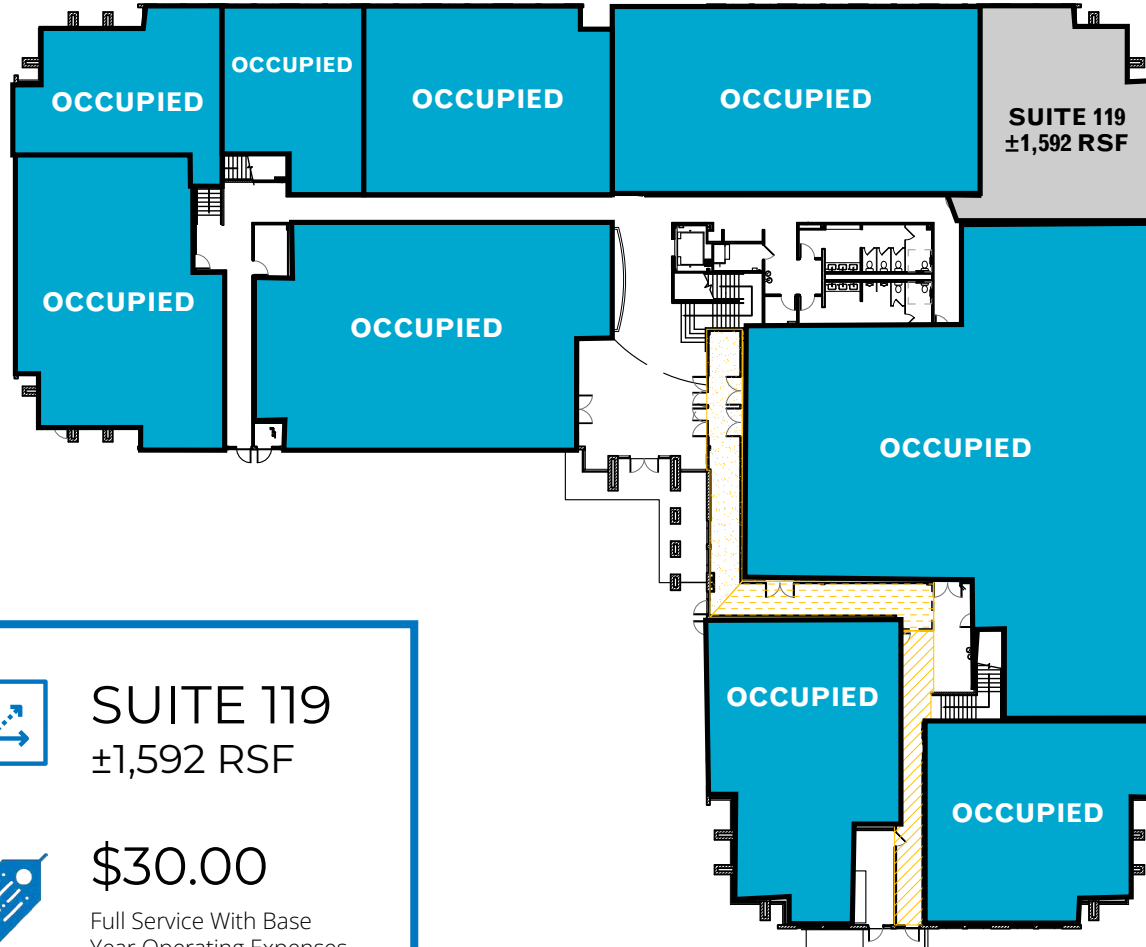
TI'S

Available

2ND FLOOR ±30,361 RSF DIVISIBLE TO 1,200 RSF | 1ST FLOOR SUITE 119 ±1,592 RSF

# Availability

1st Floor  
Floor Plan



 SUITE 119  
±1,592 RSF

 \$30.00  
Full Service With Base  
Year Operating Expenses

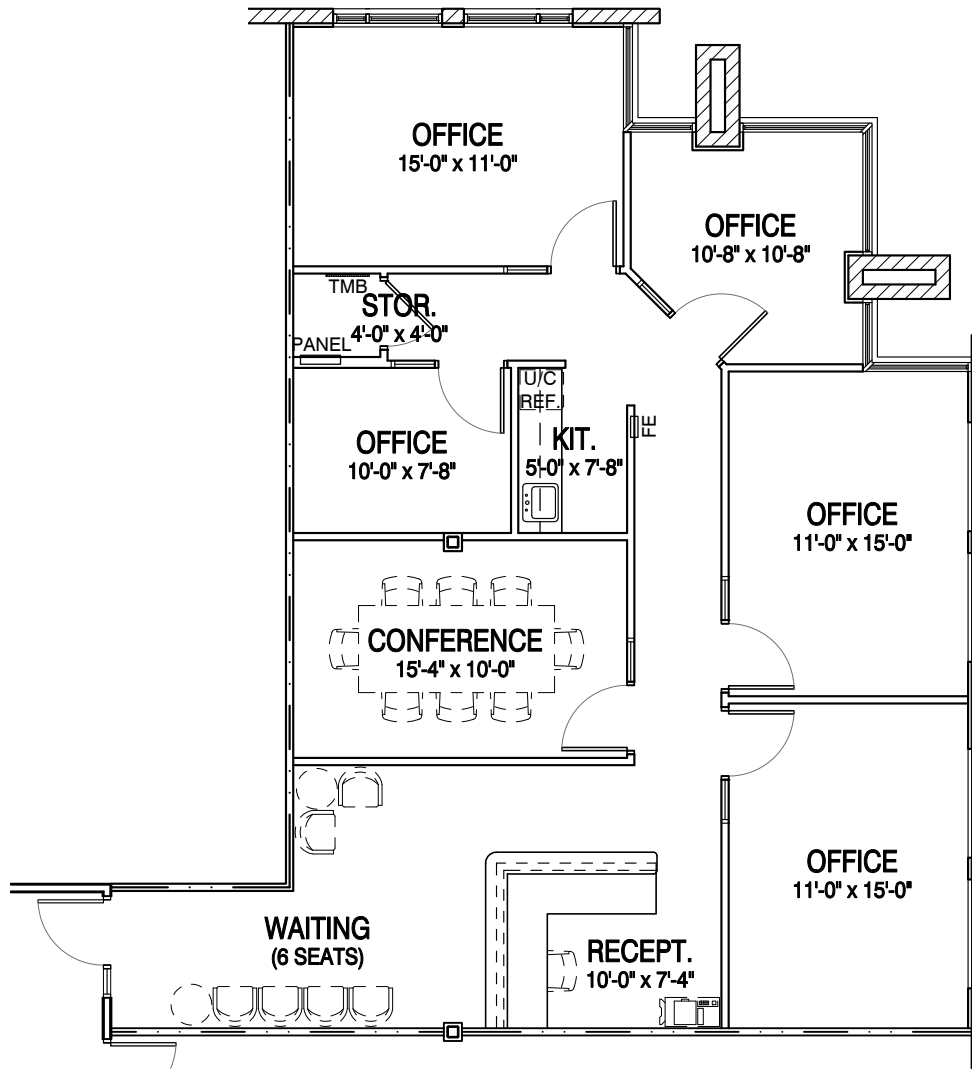
**PLEASE CONTACT YOUR EXCLUSIVE ADVISORS FOR MORE INFORMATION**

**KATHLEEN MORGAN** • Senior Vice President • T 602-809-1048 •  
Kathleen.Morgan@transwestern.com

**KEVIN SMIGIEL** • Vice President • T 602-550-9295 •  
Kevin.Smigiel@transwestern.com

# Availability

1<sup>st</sup> Floor  
Floor Plan



**SUITE 119**  
±1,592 RSF



**\$30.00**  
Full Service With Base  
Year Operating Expenses

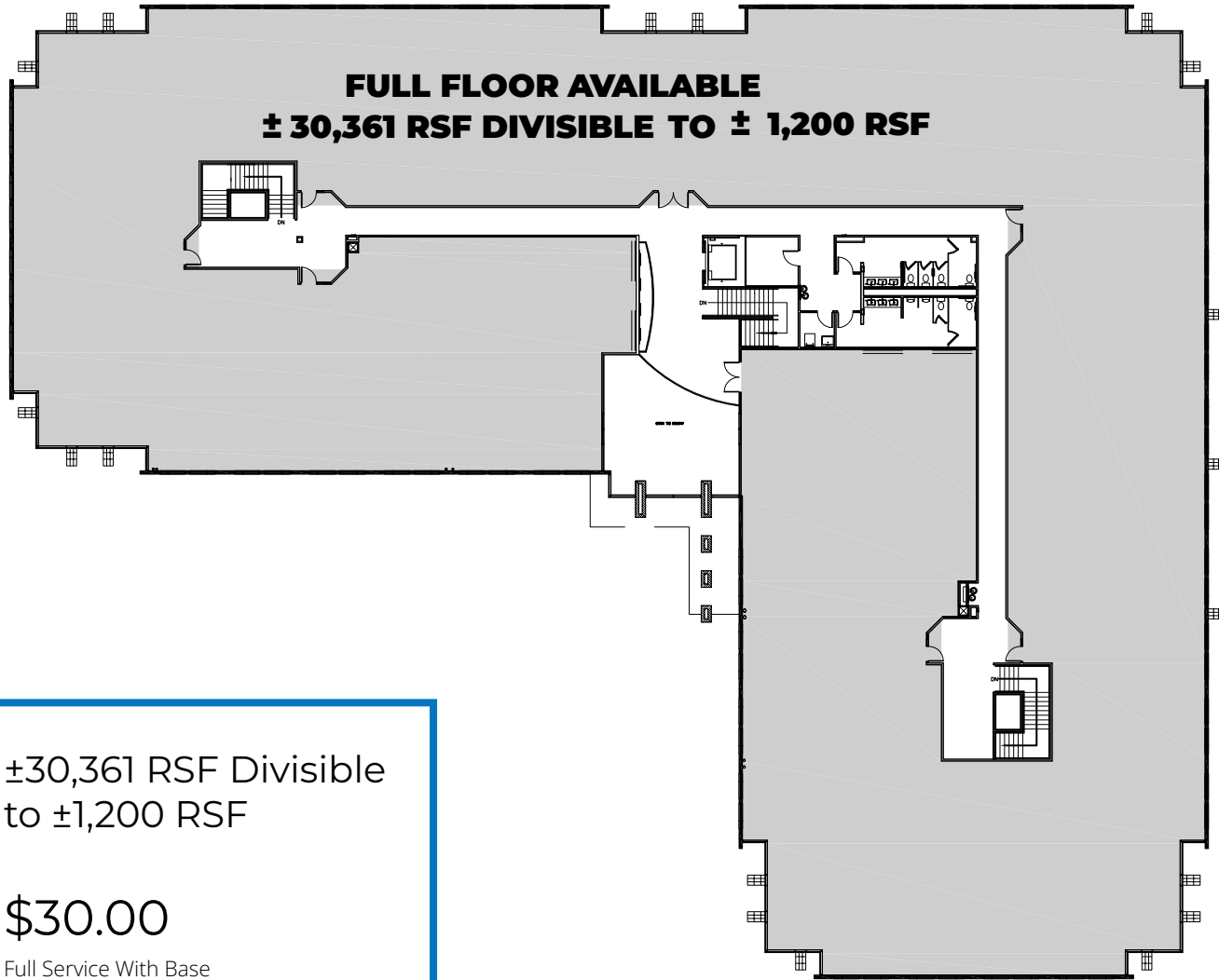
**PLEASE CONTACT YOUR EXCLUSIVE ADVISORS FOR MORE INFORMATION**

**KATHLEEN MORGAN** • Senior Vice President • T 602-809-1048 •  
Kathleen.Morgan@transwestern.com

**KEVIN SMIGIEL** • Vice President • T 602-550-9295 •  
Kevin.Smigiel@transwestern.com

# Availability

2nd Floor  
Plate  
Full Floor  
User



±30,361 RSF Divisible  
to ±1,200 RSF



**\$30.00**

Full Service With Base  
Year Operating Expenses

**PLEASE CONTACT YOUR EXCLUSIVE ADVISORS FOR MORE INFORMATION**

**KATHLEEN MORGAN** • Senior Vice President • T 602-809-1048 •  
Kathleen.Morgan@transwestern.com

**KEVIN SMIGIEL** • Vice President • T 602-550-9295 •  
Kevin.Smigiel@transwestern.com

# Location



Anthem Corporate



W Anthem Way

W Anthem Way

N Ventura Dr.

PLEASE CONTACT YOUR EXCLUSIVE ADVISORS FOR MORE INFORMATION

**KATHLEEN MORGAN** • Senior Vice President • T 602-809-1048 • [Kathleen.Morgan@transwestern.com](mailto:Kathleen.Morgan@transwestern.com)  
**KEVIN SMIGIEL** • Vice President • T 602-550-9295 • [Kevin.Smigiel@transwestern.com](mailto:Kevin.Smigiel@transwestern.com)