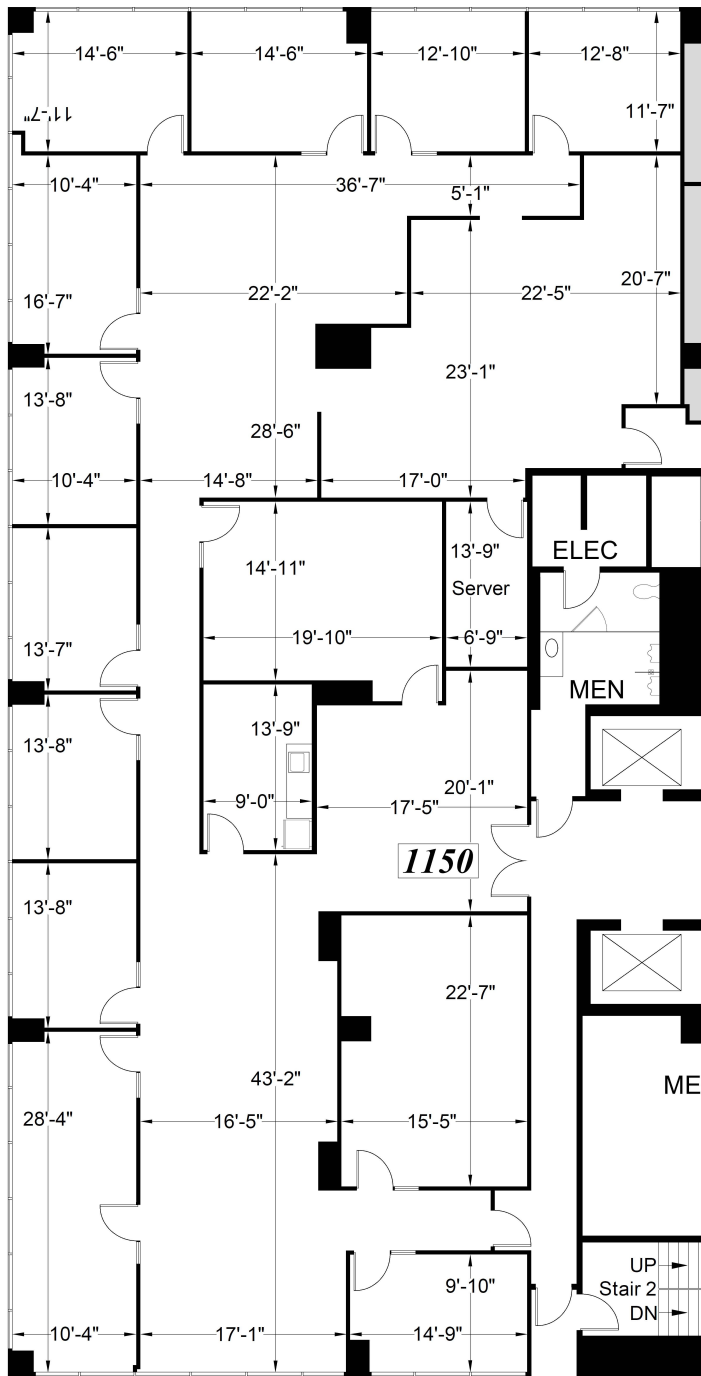
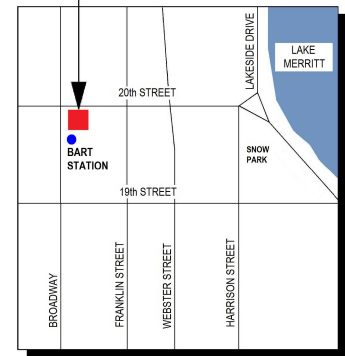


**CLASS A OFFICE SPACE FOR LEASE | GOLDEN WEST TOWER BUILDING**

1970 Broadway, Oakland, CA



THE TOWER BUILDING  
1970 BROADWAY



SITE LOCATION MAP

FLOOR LOCATION



11TH FLOOR KEY PLAN

*Plans not to scale*

**Suite 1150: ±6,652 RSF**

**\$3.75/RSF/Month, FSG**

**AVAILABLE 60 Days**

**LEASING INFORMATION**

**Bob Maderious**  
Senior Vice President

925.357.2010

bob.maderious@transwestern.com

CA DRE Lic. 00616136

[www.1970Broadway.com](http://www.1970Broadway.com)

2175 N. California Blvd, Suite 415  
Walnut Creek, CA 94596

CA BROKERAGE LIC 01263636  
T 925.357.2000 F 925.357.2001

[www.transwestern.com](http://www.transwestern.com)

The information provided herein was obtained from sources believed reliable; however, Transwestern makes no guarantees, warranties or representations as to the completeness or accuracy thereof. The presentation of this property is submitted subject to errors, omissions, change of price or conditions, prior sale or lease, or withdrawal without notice. Copyright © 2024 Transwestern.

