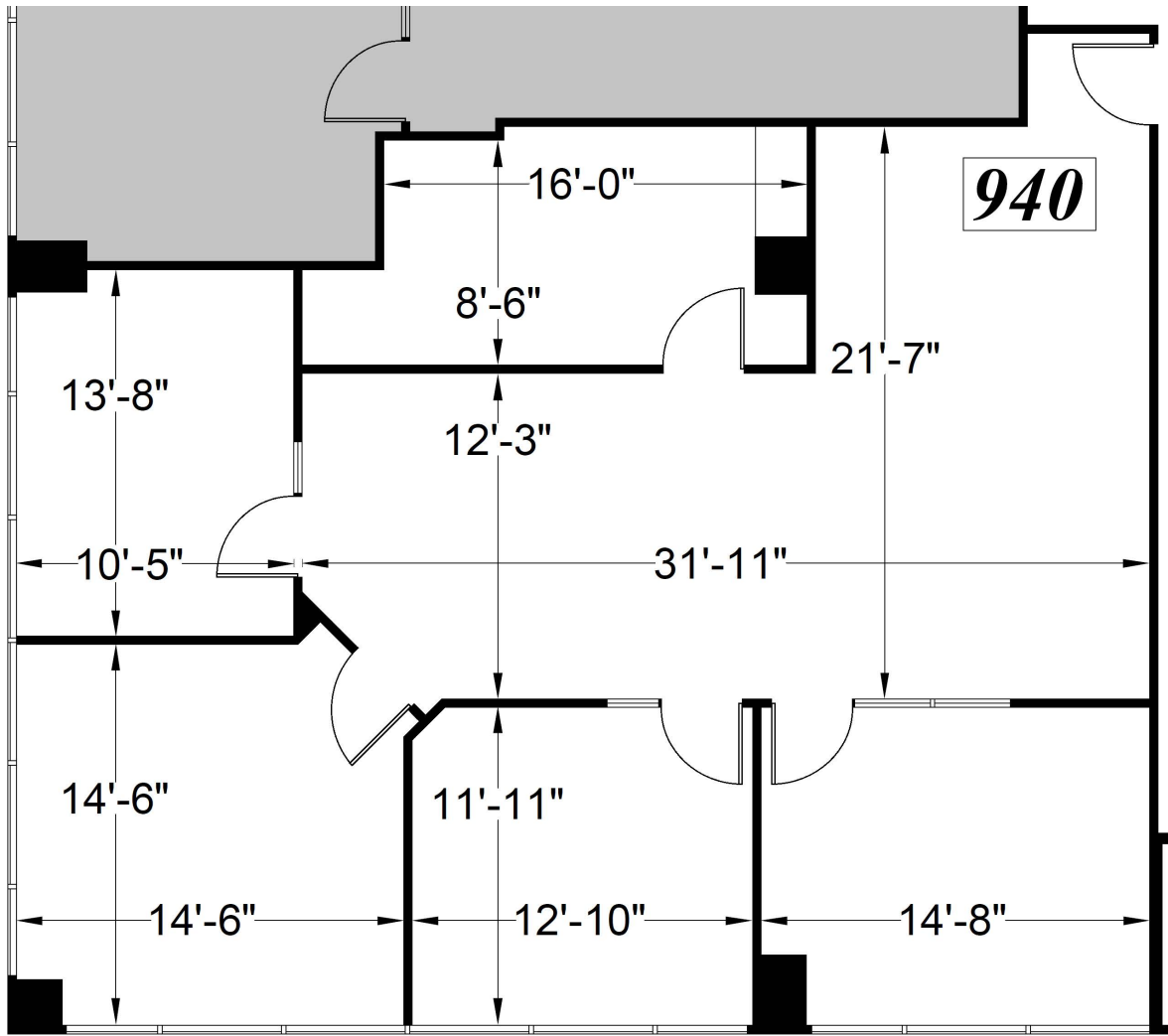
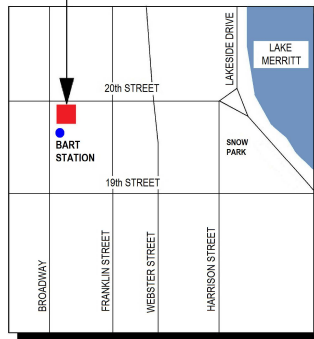


CLASS A OFFICE SPACE FOR LEASE | GOLDEN WEST TOWER BUILDING

1970 Broadway, Oakland, CA

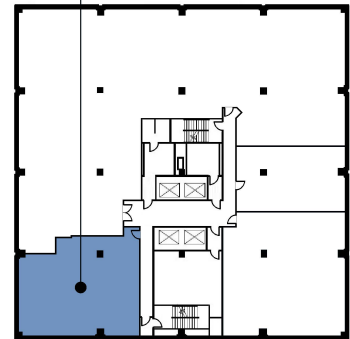


THE TOWER BUILDING
1970 BROADWAY



SITE LOCATION MAP

FLOOR
LOCATION



9TH FLOOR KEY PLAN

Suite 940: ±1,737 RSF

\$3.75/RSF/Month, FSG

AVAILABLE NOW

Plans not to scale

LEASING INFORMATION

Bob Maderious
Senior Vice President
925.357.2010
bob.maderious@transwestern.com
LIC 00616136

www.1970Broadway.com

2175 N. California Blvd, Suite 415
Walnut Creek, CA 94596
CA BROKERAGE LIC 01263636
T 925.357.2000 F 925.357.2001

www.transwestern.com

The information provided herein was obtained from sources believed reliable; however, Transwestern makes no guarantees, warranties or representations as to the completeness or accuracy thereof. The presentation of this property is submitted subject to errors, omissions, change of price or conditions, prior sale or lease, or withdrawal without notice. Copyright © 2023 Transwestern.

