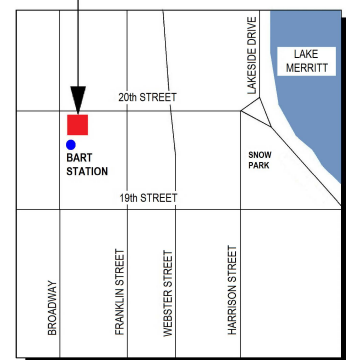


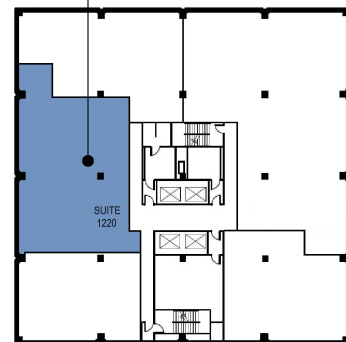
CLASS A OFFICE SPACE FOR LEASE | **GOLDEN WEST TOWER BUILDING**

1970 Broadway, Oakland, CA

THE TOWER BUILDING
1970 BROADWAY



FLOOR
LOCATION



12TH FLOOR KEY PLAN

Plans not to scale

Suite 1220: ±2,916 RSF

\$3.75/RSF/Month, FSG

AVAILABLE

LEASING INFORMATION

Bob Maderious
Senior Vice President

925.357.2010

bob.maderious@transwestern.com

CA DRE Lic. 00616136

www.1970Broadway.com

2175 N. California Blvd, Suite 415
Walnut Creek, CA 94596

CA BROKERAGE LIC 01263636
T 925.357.2000 **F** 925.357.2001

www.transwestern.com

The information provided herein was obtained from sources believed reliable; however, Transwestern makes no guarantees, warranties or representations as to the completeness or accuracy thereof. The presentation of this property is submitted subject to errors, omissions, change of price or conditions, prior sale or lease, or withdrawal without notice. Copyright © 2024 Transwestern.

T
TRANSWESTERN
REAL ESTATE
SERVICES