



TRANSWESTERN

REAL ESTATE  
SERVICES

# 820 Heinz Ave

BERKELEY, CA

**±8,200 RSF**

1<sup>ST</sup> FLOOR AVAILABLE FOR SUBLEASE

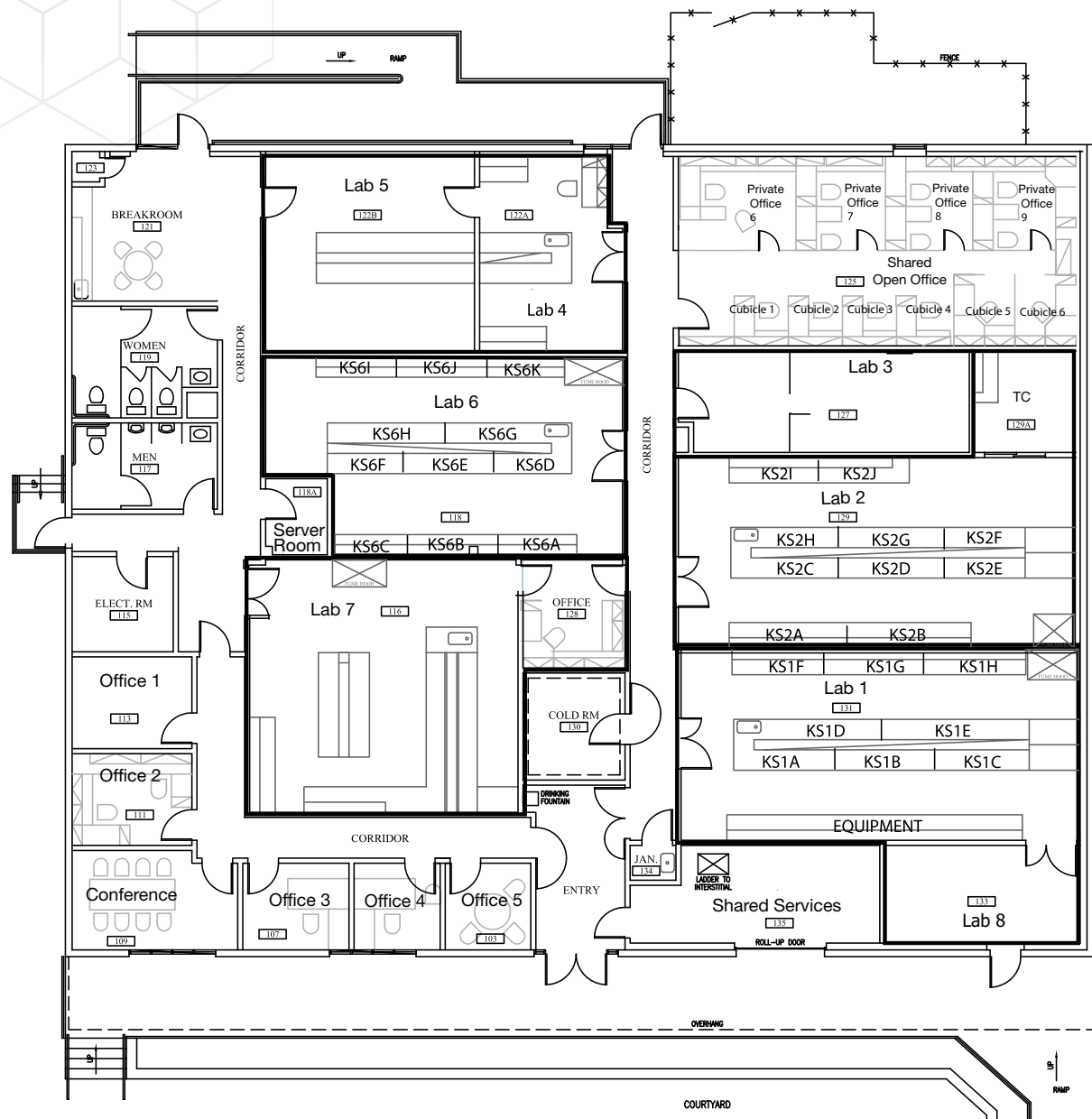
# 820 Heinz Ave

BERKELEY, CA

## Space Features

- Highly Capable Wet Laboratory Space
- 70–30 Lab to Office Ratio
- 4 Fume Hoods
- 4 BSCs
- 10 Meeting Rooms
- Cold Storage Room
- Autoclaves
- Roll-Up Shipping Receiving
- Tissue Culture Suite
- Dark Room

**360°** Matterport  
Virtual Tour



Floor plan not to scale

The information provided herein was obtained from sources believed reliable; however, Transwestern makes no guarantees, warranties or representations as to the completeness or accuracy thereof. The presentation of this property is submitted subject to errors, omissions, change of price or conditions, prior sale or lease, or withdrawal without notice. Copyright © 2024 Transwestern



# 820 Heinz Ave

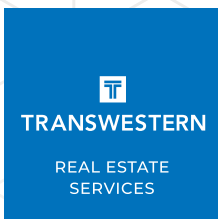
BERKELEY, CA

1<sup>st</sup> Floor

360° Matterport  
Virtual Tour



The information provided herein was obtained from sources believed reliable; however, Transwestern makes no guarantees, warranties or representations as to the completeness or accuracy thereof. The presentation of this property is submitted subject to errors, omissions, change of price or conditions, prior sale or lease, or withdrawal without notice. Copyright © 2024 Transwestern



## Contacts

### Peter Conte

Senior Vice President

415.489.1844

[peter.conte@transwestern.com](mailto:peter.conte@transwestern.com)

### Andrew Wheeler

Vice President

415.489.1831

[andrew.wheeler@transwestern.com](mailto:andrew.wheeler@transwestern.com)

### Mairaj Din

Associate

415.489.1769

[mairaj.din@transwestern.com](mailto:mairaj.din@transwestern.com)

The information provided herein was obtained from sources believed reliable; however, Transwestern makes no guarantees, warranties or representations as to the completeness or accuracy thereof. The presentation of this property is submitted subject to errors, omissions, change of price or conditions, prior sale or lease, or withdrawal without notice.  
Copyright © 2024 Transwestern



**820**  
**Heinz Ave**  
BERKELEY, CA

**±8,200 RSF**

**1<sup>ST</sup> FLOOR AVAILABLE FOR SUBLEASE**