

1345 ENCLAVE PARKWAY

FLOOR 1



For Leasing Inquires:

EVELYN WARD

713.270.3352

Evelyn.Ward@transwestern.com

JOHN HEARD

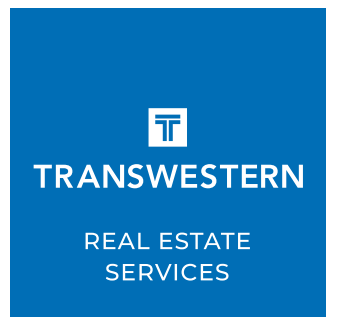
713.819.7153

John.Heard@transwestern.com

ERIC ANDERSON

713.407.8704

Eric.Anderson@transwestern.com



1345 ENCLAVE PARKWAY

FLOOR 2



For Leasing Inquires:

EVELYN WARD

713.270.3352

Evelyn.Ward@transwestern.com

JOHN HEARD

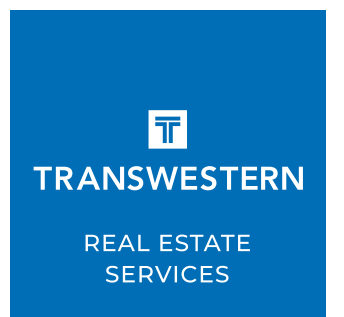
713.819.7153

John.Heard@transwestern.com

ERIC ANDERSON

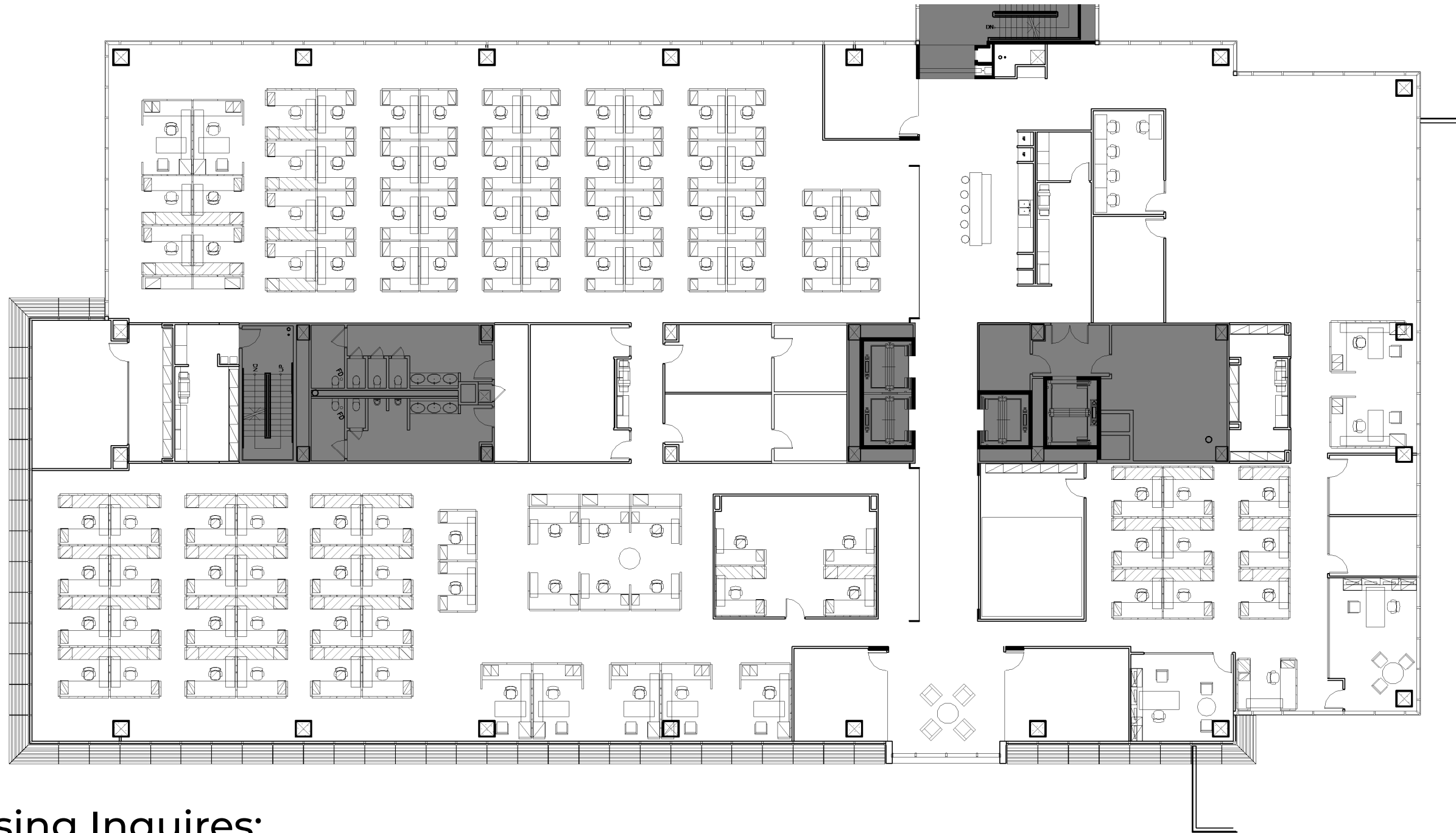
713.407.8704

Eric.Anderson@transwestern.com



1345 ENCLAVE PARKWAY

FLOOR 3



For Leasing Inquires:

EVELYN WARD

713.270.3352

Evelyn.Ward@transwestern.com

JOHN HEARD

713.819.7153

John.Heard@transwestern.com

ERIC ANDERSON

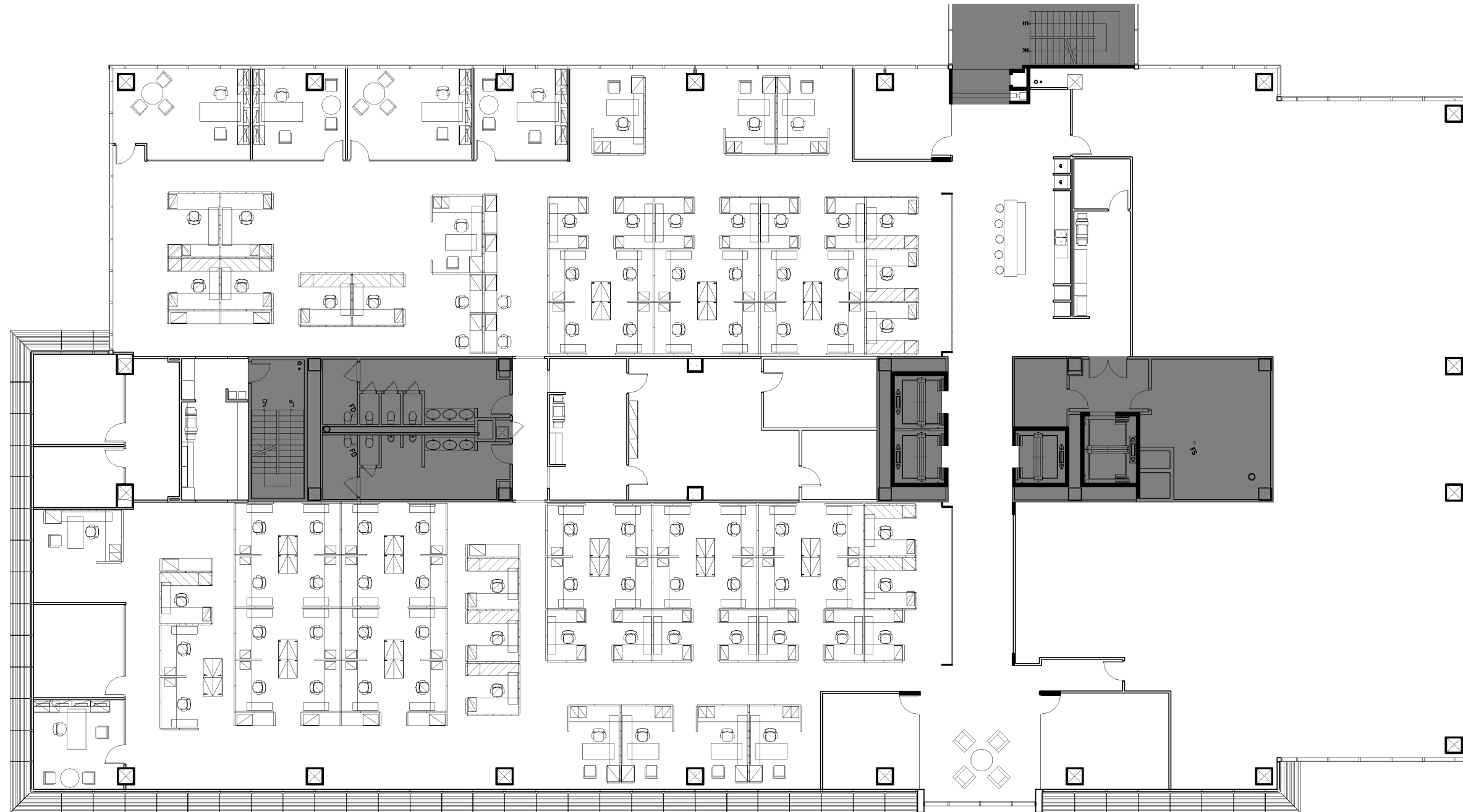
713.407.8704

Eric.Anderson@transwestern.com


TRANSWESTERN
REAL ESTATE
SERVICES

1345 ENCLAVE PARKWAY

FLOOR 4



For Leasing Inquires:

EVELYN WARD

713.270.3352

Evelyn.Ward@transwestern.com

JOHN HEARD

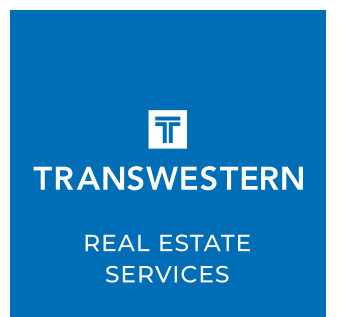
713.819.7153

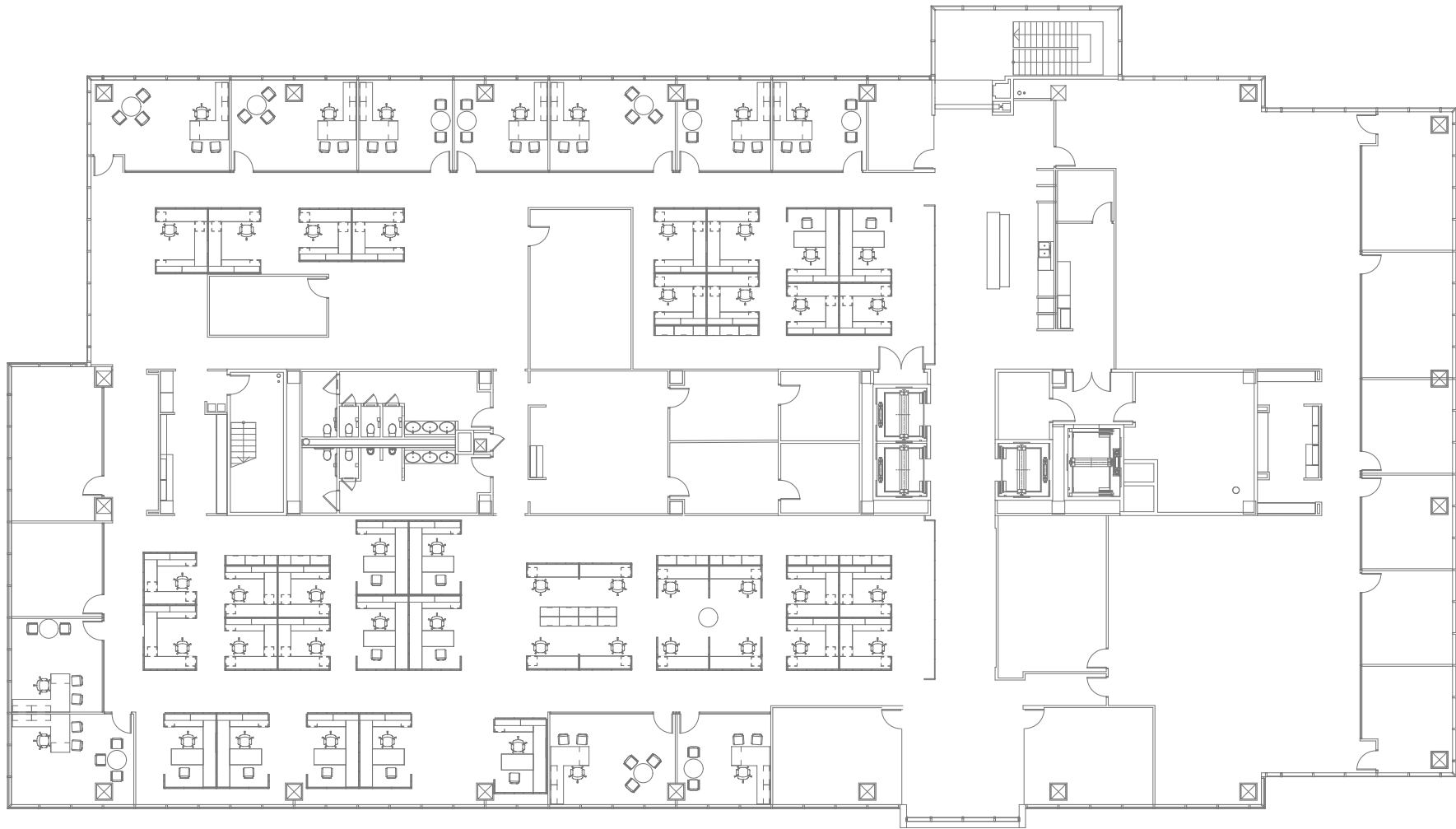
John.Heard@transwestern.com

ERIC ANDERSON

713.407.8704

Eric.Anderson@transwestern.com





1345 Enclave Parkway

Level 5

Date Issued | 11/11/24



LEASING CONTACT:

Evelyn Ward
P: 713.270.3352
E: Evelyn.ward@transwestern.com

John Heard
P: 713.819.7153
E: John.heard@transwestern.com

Eric Anderson
P: 713.407.8704
E: eric.anderson@transwestern.com



T 281.901.4128 | www.fridelldesign.com