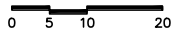
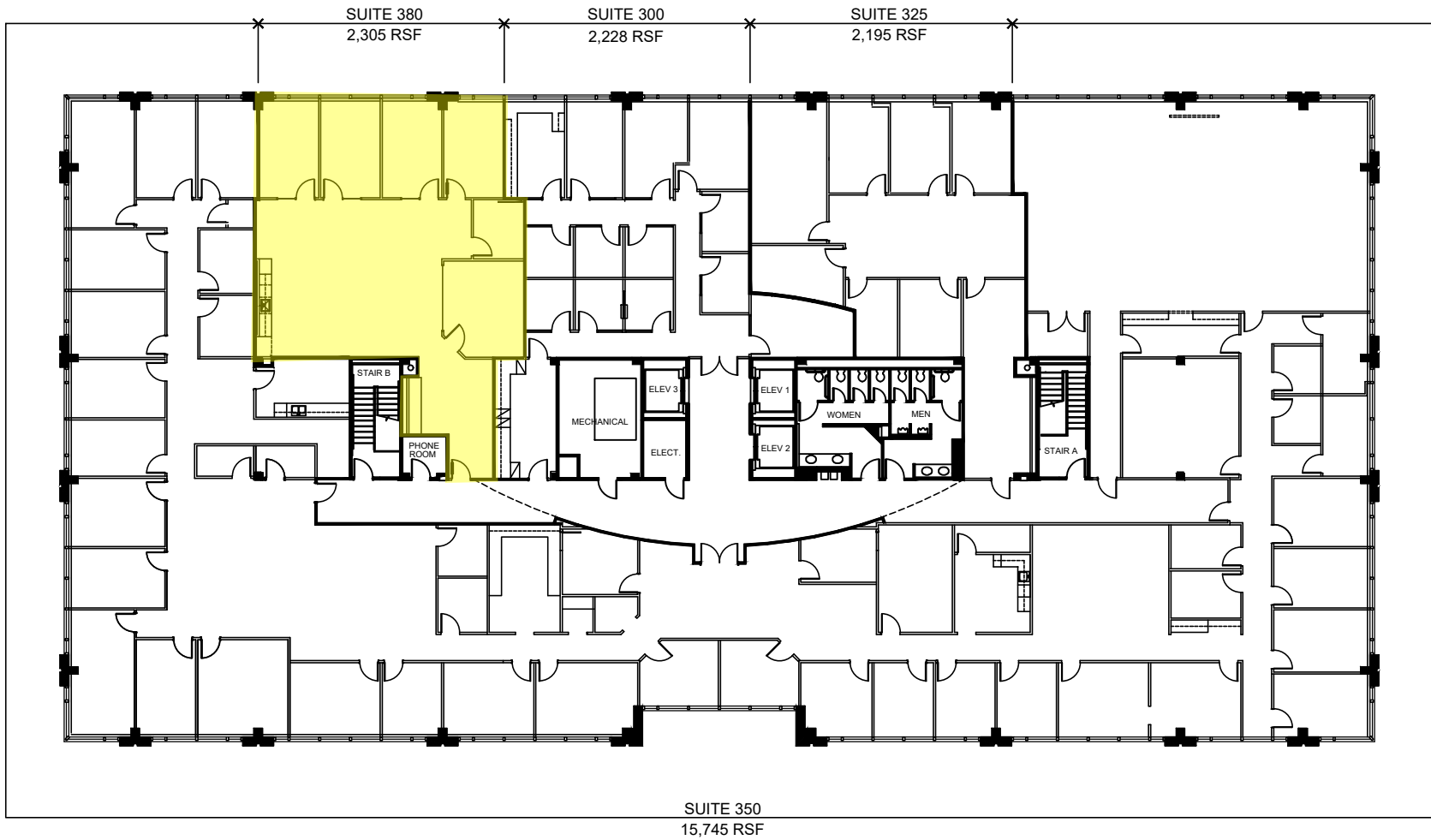


VIRTUAL TOUR



Floor plans are for conceptual purposes only; they are not to scale and may not reflect existing conditions. As-builts must be verified. Not for regulatory approval, permitting, or construction.



TRANSWESTERN
REAL ESTATE
SERVICES

LEASING CONTACT
OFFICE LEASING:
LOUANN PEREIRA
LOUANN.PEREIRA@TRANSWESTERN.COM
713-272-1267

CONTACT
PROP. MANAGEMENT:
KATY MAYER
KATY.MAYER@TRANSWESTERN.COM
281-494-2128

KENSINGTON II
1650 HIGHWAY 6
LEVEL 03

CB223328_01-DC

AUGUST 31, 2023

ARCHITECT CONTACT
5065 Westheimer Rd., Ste #1100,
Houston, TX 77056
Phone: (713) 783.5900 | Fax: (713) 783.6066
www.cdi-douglass-pye.com

CDI
Douglass • Pye, Inc.