



TRANSWESTERN

REAL ESTATE
SERVICES

EBT
OFFICE CENTER

EBT OFFICE CENTER

6120 EARLE BROWN DR, BROOKLYN CENTER, MN 55430



CONVENIENTLY LOCATED

PROPERTY SPECIFICATIONS

Property Summary

- **Availability:** 540 - 17,972 SF
- **Lease Rate:** \$11.00 PSF NNN
- **Operating Expenses:** \$8.65 PSF
- **Real Estate Taxes:** \$1.51 PSF
- **2025 Estimate:** \$10.16 PSF
- **Parking Ratio:** 5.0/1,000 SF

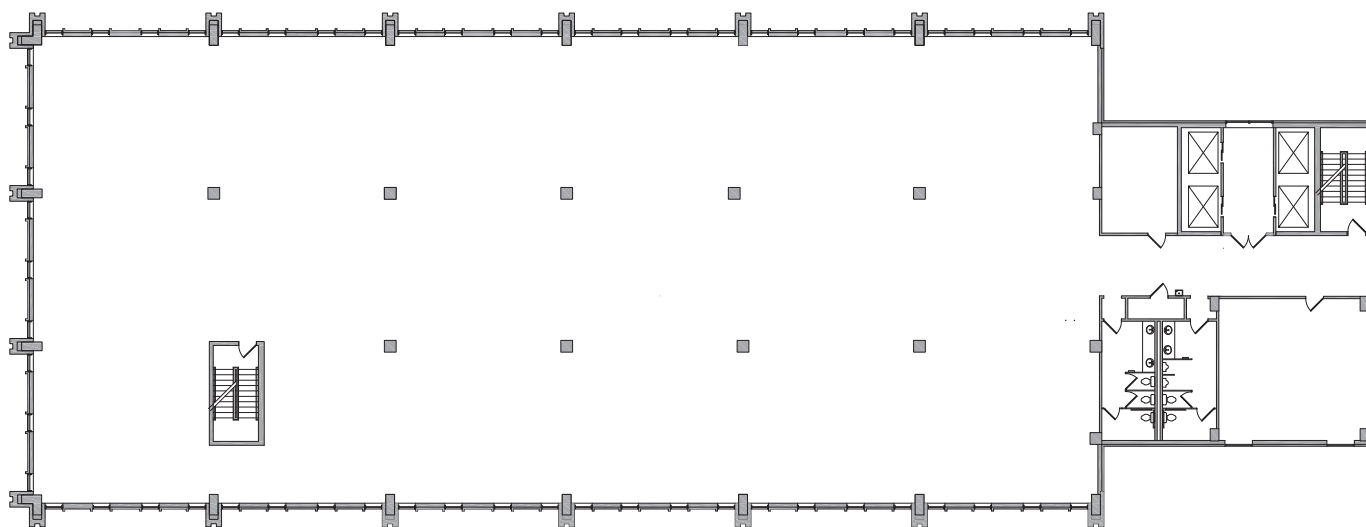
Property Amenities

- Abundant amount of surface parking
- Signage visibility from Interstate
- Building signage available
- Underground parking available
- Building conference rooms
- New fitness facility
- Locker rooms and showers
- Vended lunch area
- Bike storage
- In close proximity to over 25 restaurants, multiple banks and plenty of retail
- Easy access to Hwy. 100, I-694 and I-94
- MTC Bus Route #722
Nearby Brooklyn Center Transit hub with access to a multitude of metro transit bus lines



TYPICAL FLOORPLAN

16,955 SF



Professionally Managed By:
METRO *Plains*
MANAGEMENT

TRANSWESTERN REAL ESTATE SERVICES

Eric Rapp, SIOR
612.359.1635
eric.rapp@transwestern.com

Brett Draxler
612.359.1692
brett.draxler@transwestern.com