



STONEFIELD 35

120,390 SQUARE FEET
REMAIN

CLASS A INDUSTRIAL PRODUCT IN BUDA, TEXAS

16703 N IH-35 FRONTAGE ROAD

MOVE-IN READY SUITES AVAILABLE

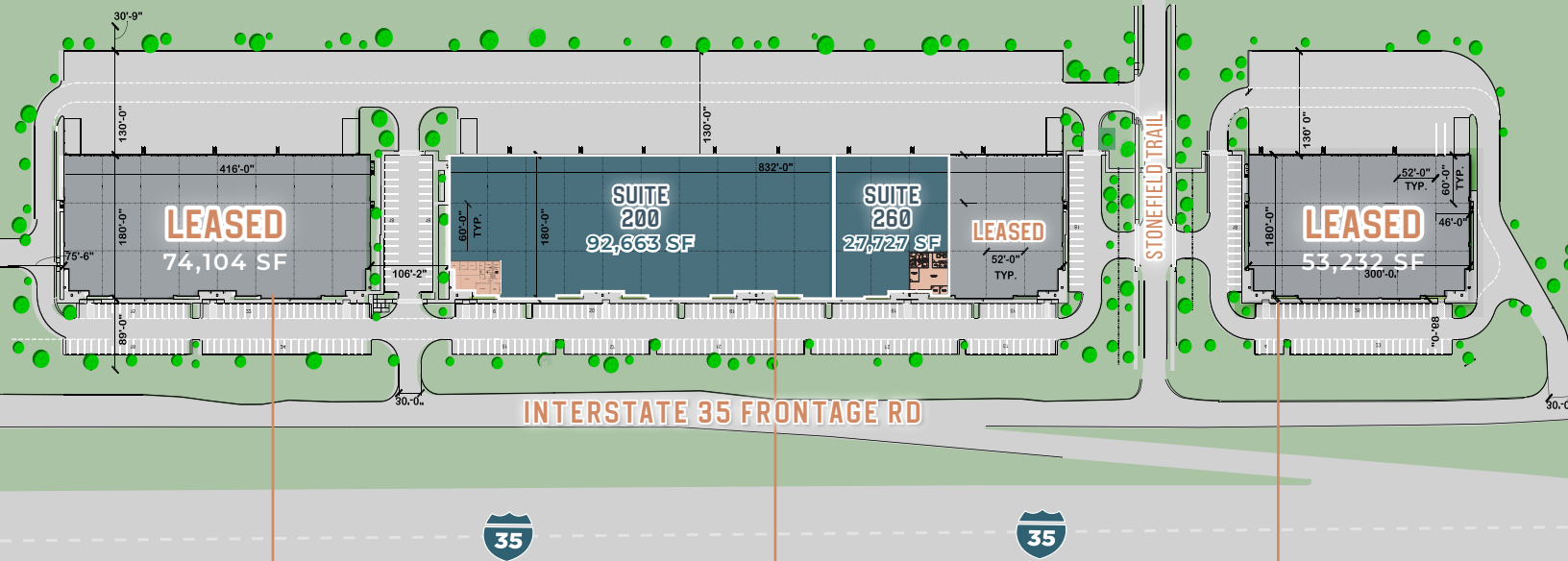
CONTACT

Nash Frisbie
806.781.5136
Nash.Frisbie@transwestern.com

Carter Thurmond
210.255.0644
Carter.Thurmond@transwestern.com

 TRANSWESTERN

SITE PLAN



STONEFIELD 35 | SPEC WAREHOUSES

BUILDING 1

LEASED

Building SF	74,104 SF
Clear Height	28'
Car Parking	97 SPACES
Dock Doors	24 DOORS
Ramps	2 RAMPS
Dimensions	180' X 416'
Column Spacing	60' X 52'
Construction	TILT WALL
Roof Type	TPO
Fire Protection	ESFR
Truck Court	130
Power	277/480V 2,000A

BUILDING 2

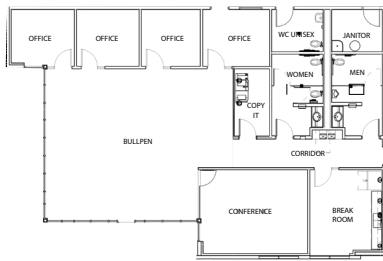
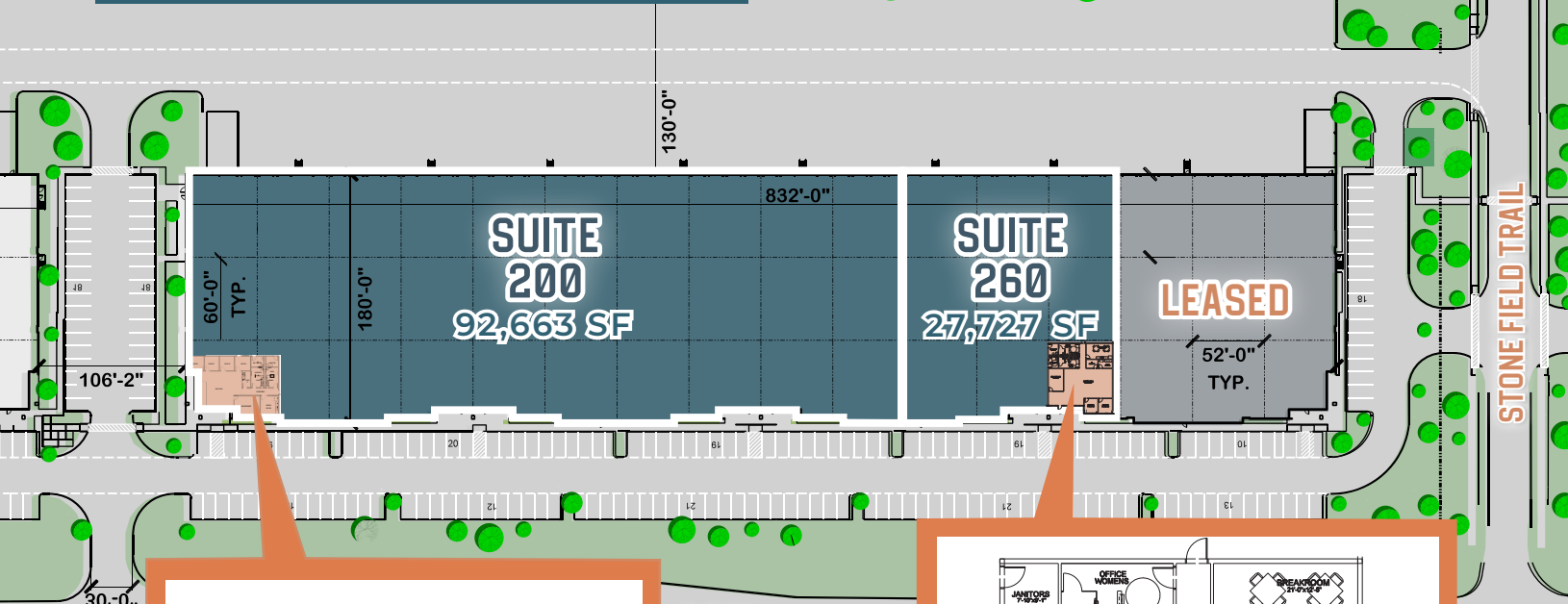
Building SF	148,223 SF
Clear Height	28'
Car Parking	195 SPACES
Dock Doors	51 DOORS
Ramps	2 RAMPS
Dimensions	180' X 832'
Column Spacing	60' X 52'
Construction	TILT WALL
Roof Type	TPO
Fire Protection	ESFR
Truck Court	130
Power	277/480V 2,000A

BUILDING 3

LEASED

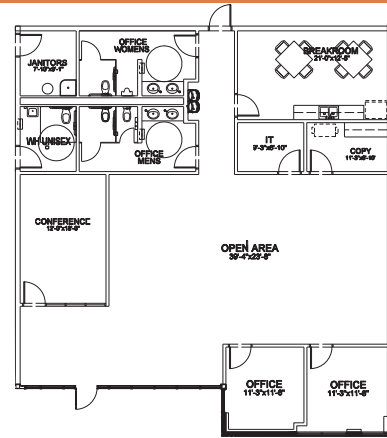
Building SF	53,232 SF
Clear Height	28'
Car Parking	71 SPACES
Dock Doors	17 DOORS
Ramps	1 RAMP
Dimensions	180' X 300'
Column Spacing	60' X 46'-52'
Construction	TILT WALL
Roof Type	TPO
Fire Protection	ESFR
Truck Court	130
Power	277/480V 1,000A

AVAILABILITIES



BUILDING 2 - SUITE 200
SPEC OFFICE: 2,631 SF

Building SF	92,663 SF
Spec SF	2,631 SF
Clear Height	28'
Dock Doors	32 DOORS
Ramps	1 RAMPS
Column Spacing	60' X 52'
Parking	123 SPACES



BUILDING 2 - SUITE 260
SPEC OFFICE: 2,806 SF

Building SF	27,727 SF
Spec SF	2,806 SF
Clear Height	28'
Dock Doors	10 DOORS
Ramps	0 RAMPS
Column Spacing	60' X 52'
Parking	36 SPACES

► ► ► **BUILDING 2**
16703 N IH-35 FRONTAGE ROAD

EASTGROUP
PROPERTIES

SUITE 200 PHOTOS



CONTACT

Nash Frisbie
806.781.5136
Nash.Frisbie@transwestern.com

Carter Thurmond
210.255.0644
Carter.Thurmond@transwestern.com

STONEFIELD

35

HAYS COUNTY

4

► ► ► **BUILDING 2**
16703 N IH-35 FRONTAGE ROAD

EASTGROUP
PROPERTIES

SUITE 260 PHOTOS



CONTACT

Nash Frisbie
806.781.5136
Nash.Frisbie@transwestern.com

Carter Thurmond
210.255.0644
Carter.Thurmond@transwestern.com

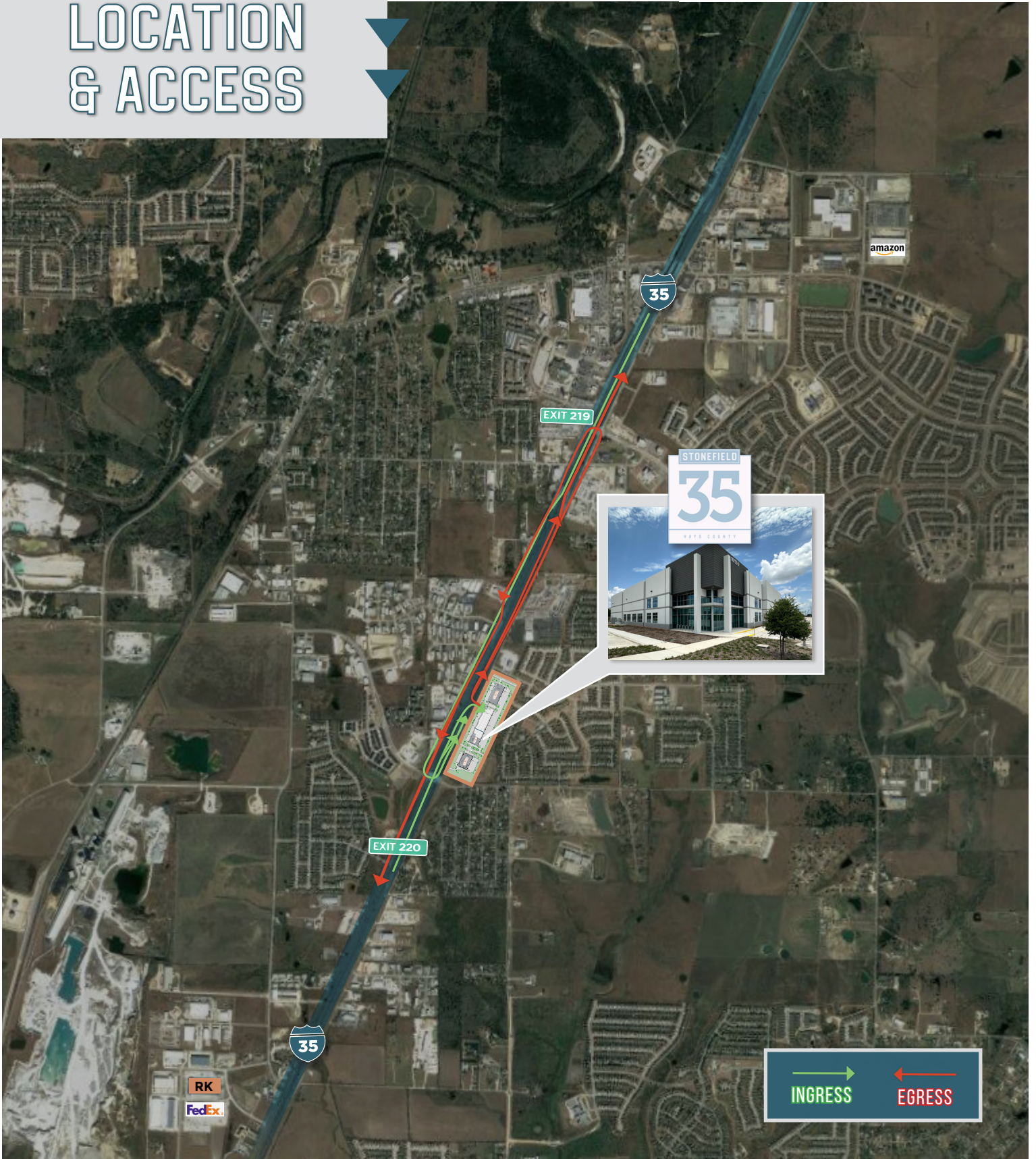
STONEFIELD

35

HAYS COUNTY

5

LOCATION & ACCESS



CONTACT

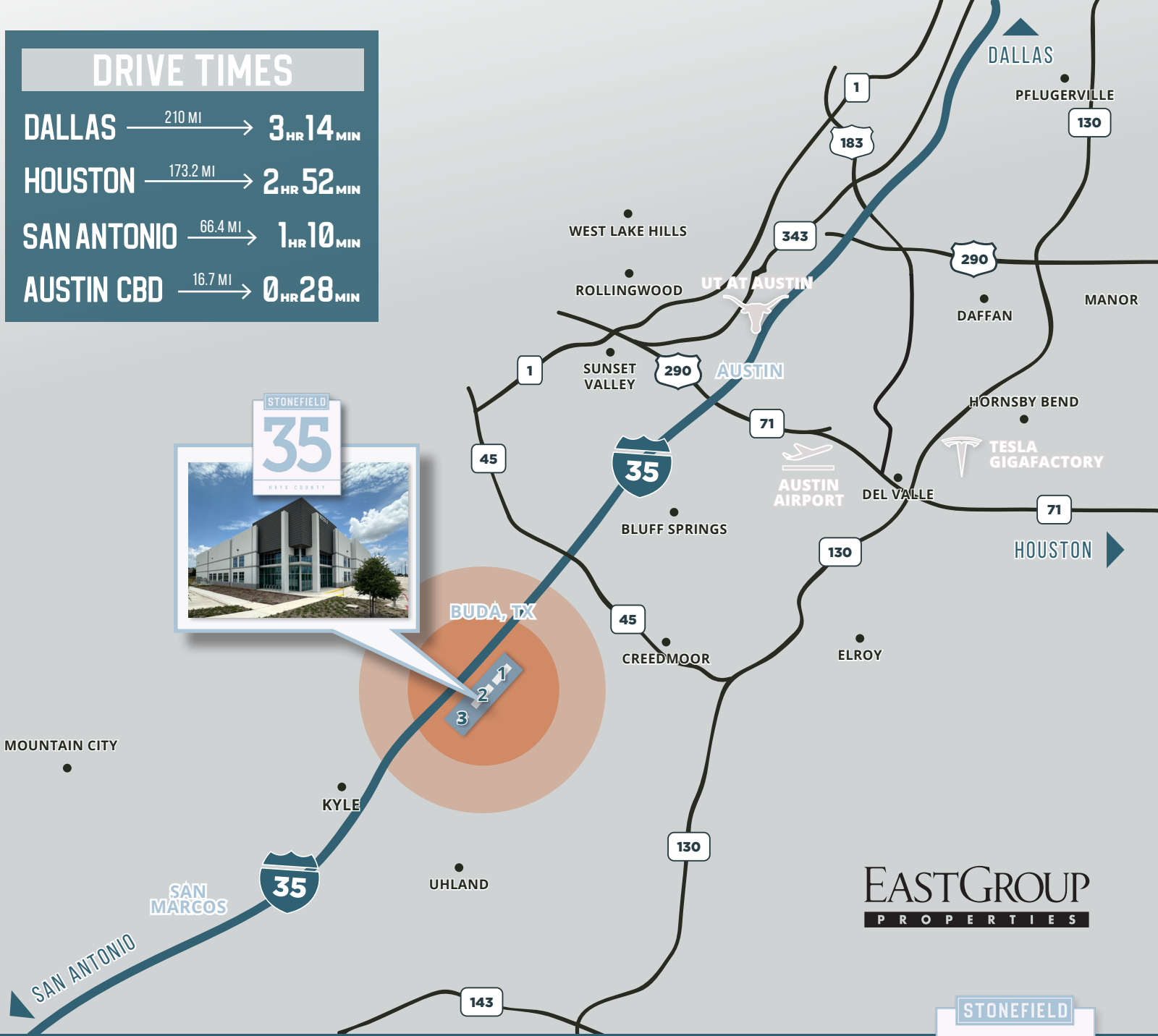
Nash Frisbie
806.781.5136
Nash.Frisbie@transwestern.com

Carter Thurmond
210.255.0644
Carter.Thurmond@transwestern.com

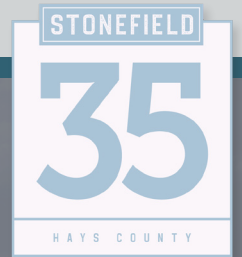


DRIVE TIMES

DALLAS $\xrightarrow{210 \text{ MI}}$ 3 HR 14 MIN
 HOUSTON $\xrightarrow{173.2 \text{ MI}}$ 2 HR 52 MIN
 SAN ANTONIO $\xrightarrow{66.4 \text{ MI}}$ 1 HR 10 MIN
 AUSTIN CBD $\xrightarrow{16.7 \text{ MI}}$ 0 HR 28 MIN



EASTGROUP
PROPERTIES



LEASING CONTACT INFO

Nash Frisbie
806.781.5136
Nash.Frisbie@transwestern.com

Carter Thurmond
210.255.0644
Carter.Thurmond@transwestern.com