

GREAT FLEX SPACE AVAILABLE FOR LEASE

TRANSWESTERN | RETAIL GROUP

2818 Fallfax Drive, Falls Church, VA



LEASE

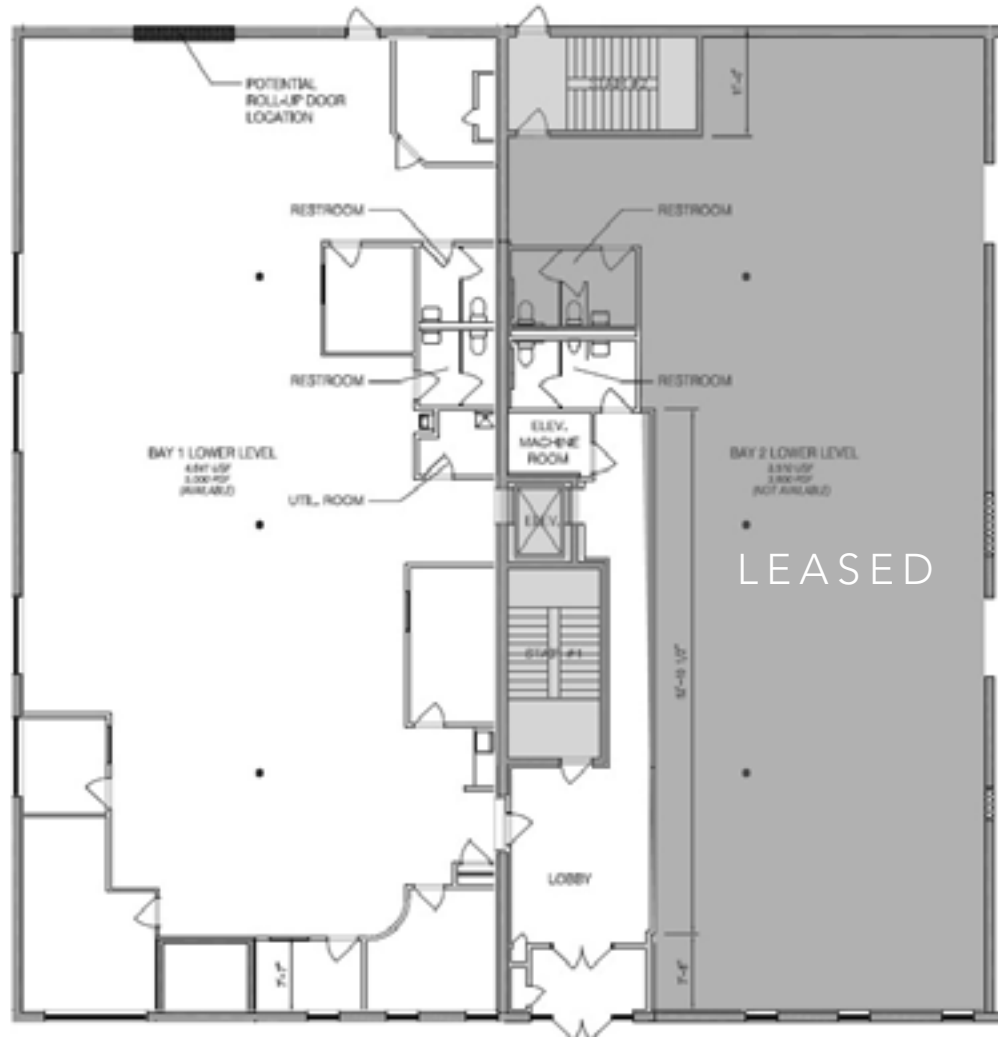
\$18 - \$20.00 NNN
Up to 14,340 SF

HIGHLIGHTS

- Space type: flex/industrial
- Unique space inside the Beltway location
- Zoning: I-4 Fairfax County
- 35 dedicated parking spots
- Just 3/4 mile east of the Beltway on Lee Hwy (Rt. 29)

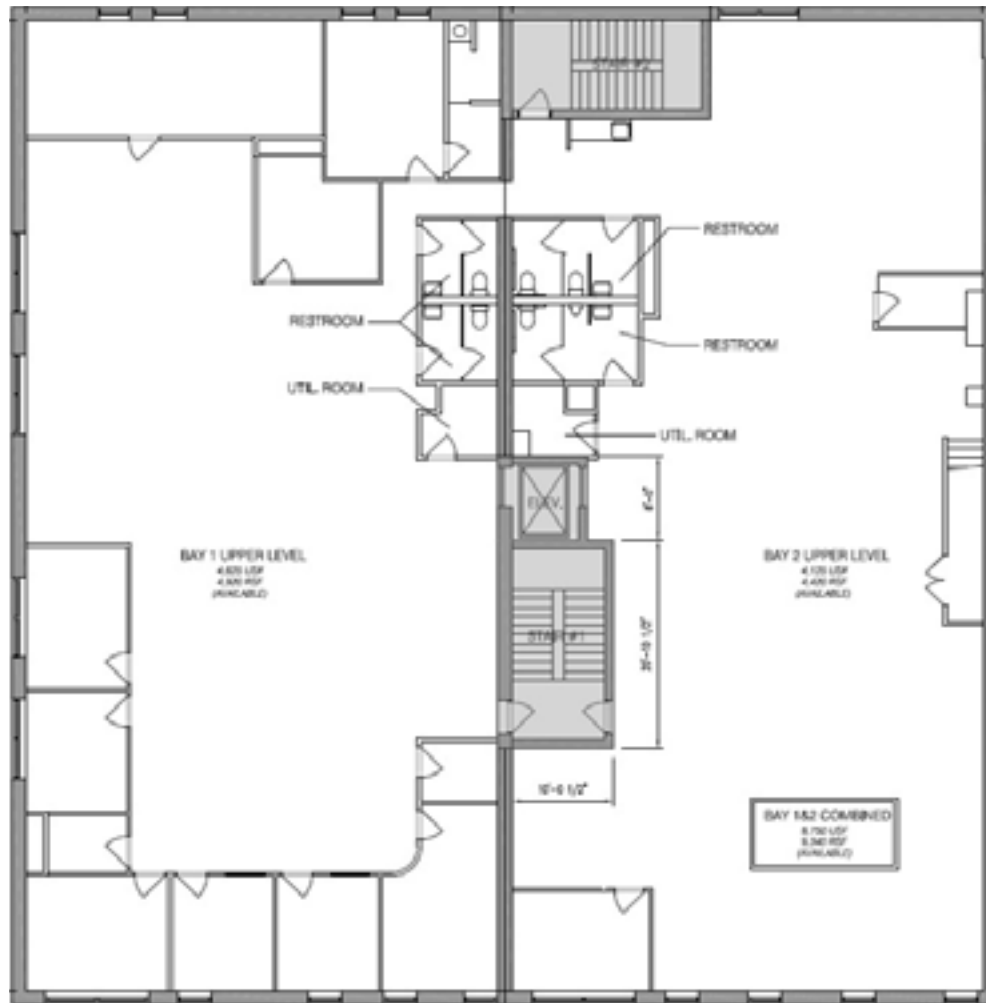
FLOOR PLANS

GROUND LEVEL



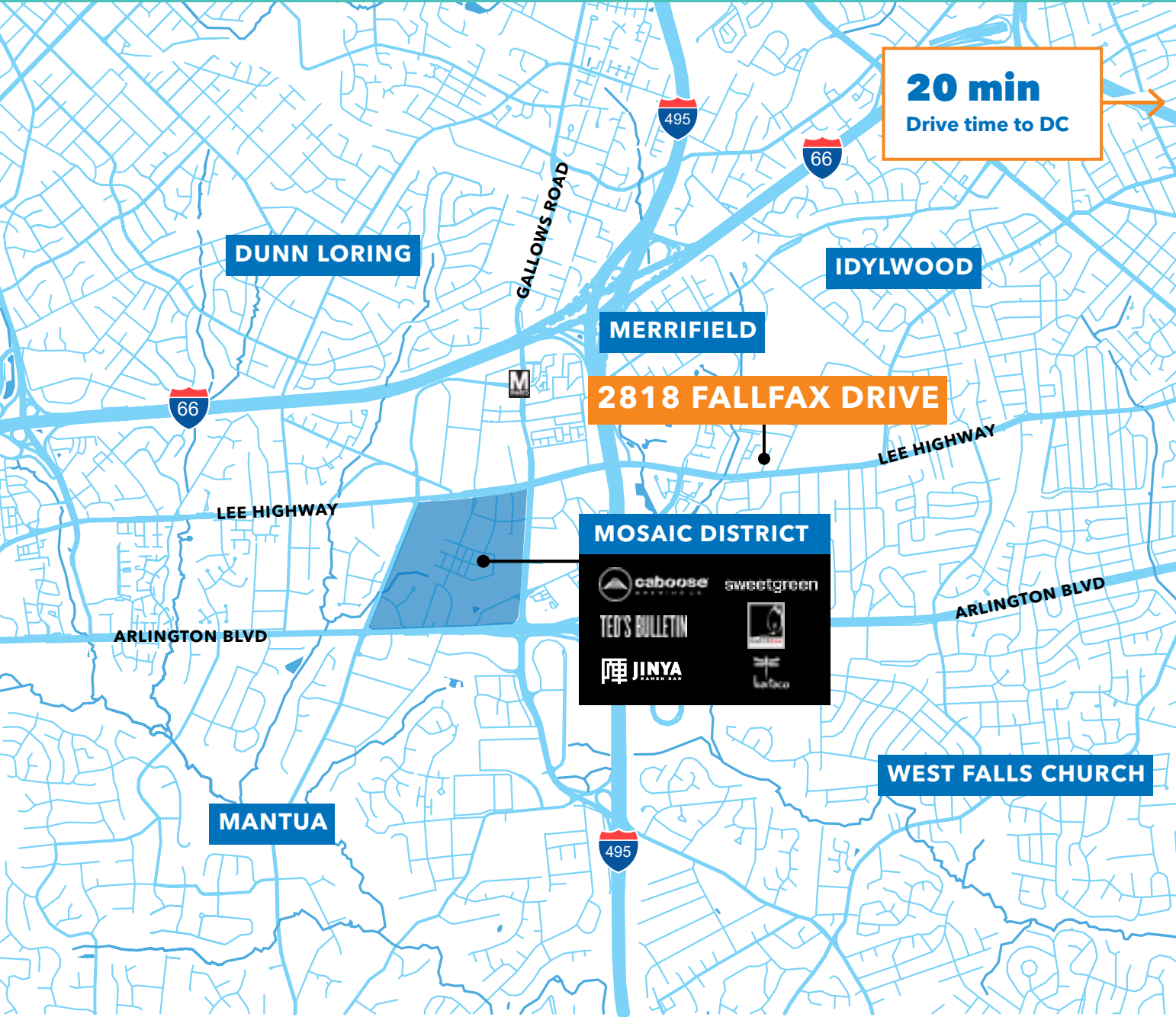
FLOOR PLANS

UPPER FLOOR



MAP OVERVIEW

2818 FALLFAX DRIVE



20 min
Drive time to DC



4 min

Drive to Mosaic District



13.8 mi

to Ronald Reagan Washington National Airport



1.8 mi

to Dunn Loring Metro Station

2818 FALLFAX DRIVE

MOSAIC DISTRICT

- caboose
- sweetgreen
- TED'S BULLETIN
- JINYA



CONNOR MCCARTHY

Director - Retail Services

Connor.McCarthy@transwestern.com // 202.775.7027