

1155

QUAIL COURT
PEWAUKEE, WI

Click here for



**OFFICE/MEDICAL SPACE
FOR LEASE**

1155

**QUAIL COURT
PEWAUKEE, WI**

GENERAL INFORMATION

This beautiful office/medical building is located Pewaukee, a two story, 12,000 square-foot, mixed use office building conveniently located within Pewaukee's highly desirable residential and commercial district. The center boasts phenomenal visibility and great accessibility from Capitol Drive. The out-the-door lifestyle amenities are exceptional for dining, entertainment, shopping, medical, wellness and fitness. Add in strong area retailers and demographics and it's perfect for your business.

BUILDING SIZE	12,000 SF
AVAILABLE SPACE	6,000 SF
LEASE RATE (NNN)	\$15.00/SF
OPERATING EXPENSES	2023 Budgeted Opex: \$5.00/SF
UTILITIES Gas/Electric Water & Sewer Trash	Separately Metered Separately Metered Included

PARKING	56 Surface Parking Spaces
TENANT IMPROVEMENTS	Negotiable to Qualified Tenants
SIGNAGE	Signage available on raised sign along Capitol Drive and monument sign along Quail Court

Building Attributes



Prime Pewaukee
Location



Prominent Signage
Opportunity



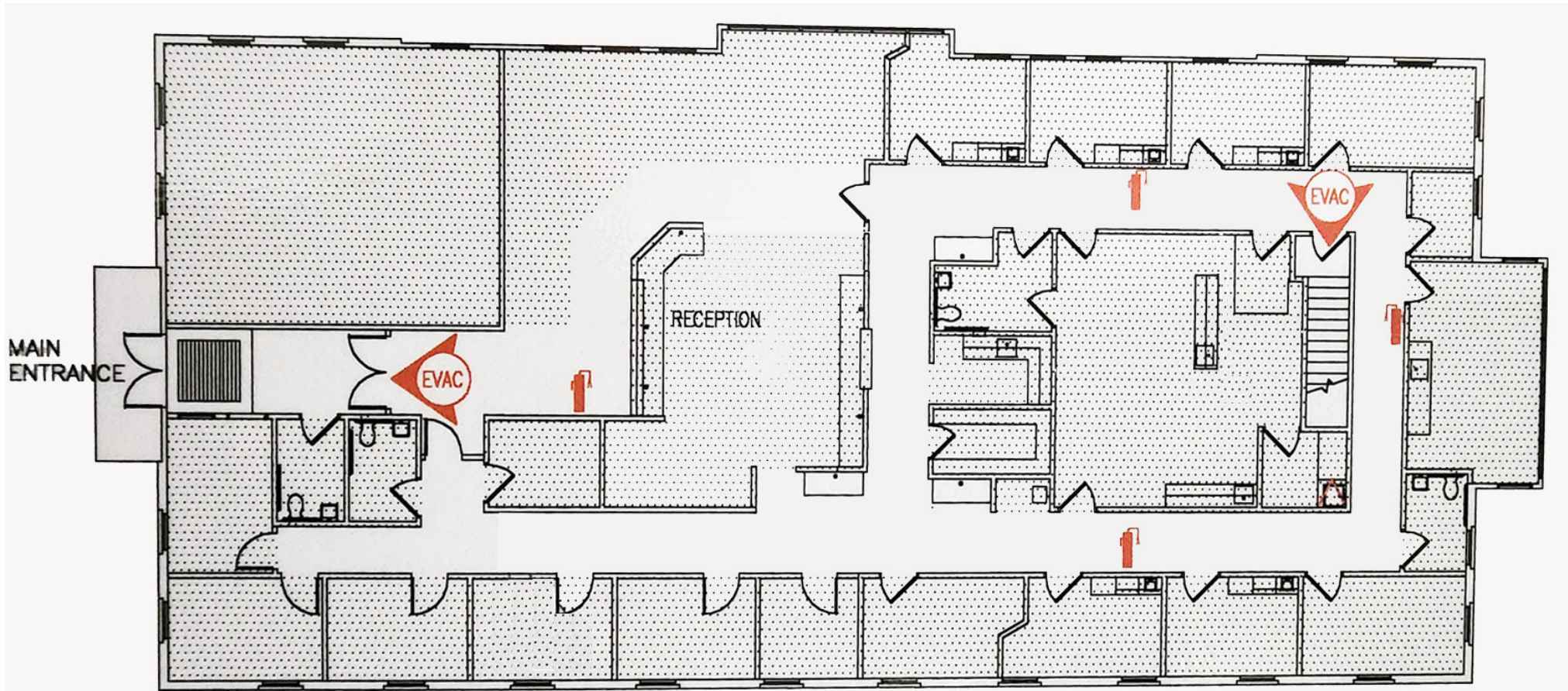
Excellent
Demographics



1155

QUAIL COURT
PEWAUKEE, WI

FLOOR PLAN





1155

QUAIL COURT
PEWAUKEE, WI

RETAILER MAP



1155

**QUAIL COURT
PEWAUKEE, WI**

DEMOGRAPHICS - 1 MILE

5,506
Population



Median Age



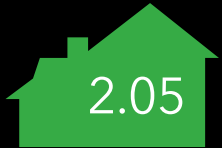
388

Total Businesses



4,845

Total Employees



2.05

Average
Household Size



\$91,472

Median Household
Income



\$64,626

Per Capita Income



\$172,477

Median Net Worth

Source: U.S. Census Bureau. Esri forecasts



1155

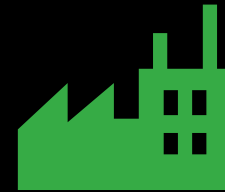
**QUAIL COURT
PEWAUKEE, WI**

DEMOGRAPHICS - 3 MILES

25,078
Population



Median Age



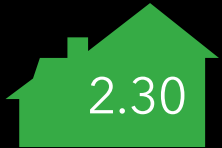
1,653

Total Businesses



28,773

Total Employees



2.30

Average
Household Size



\$107,778

Median Household
Income



\$63,352

Per Capita Income



\$330,287

Median Net Worth

Source: U.S. Census Bureau. Esri forecasts



1155

**QUAIL COURT
PEWAUKEE, WI**

DEMOGRAPHICS - 5 MILES

90,072
Population



Median Age



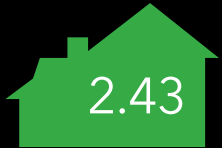
4,496

Total Businesses



81,979

Total Employees



2.43

Average
Household Size



\$103,930

Median Household
Income



\$58,638

Per Capita Income

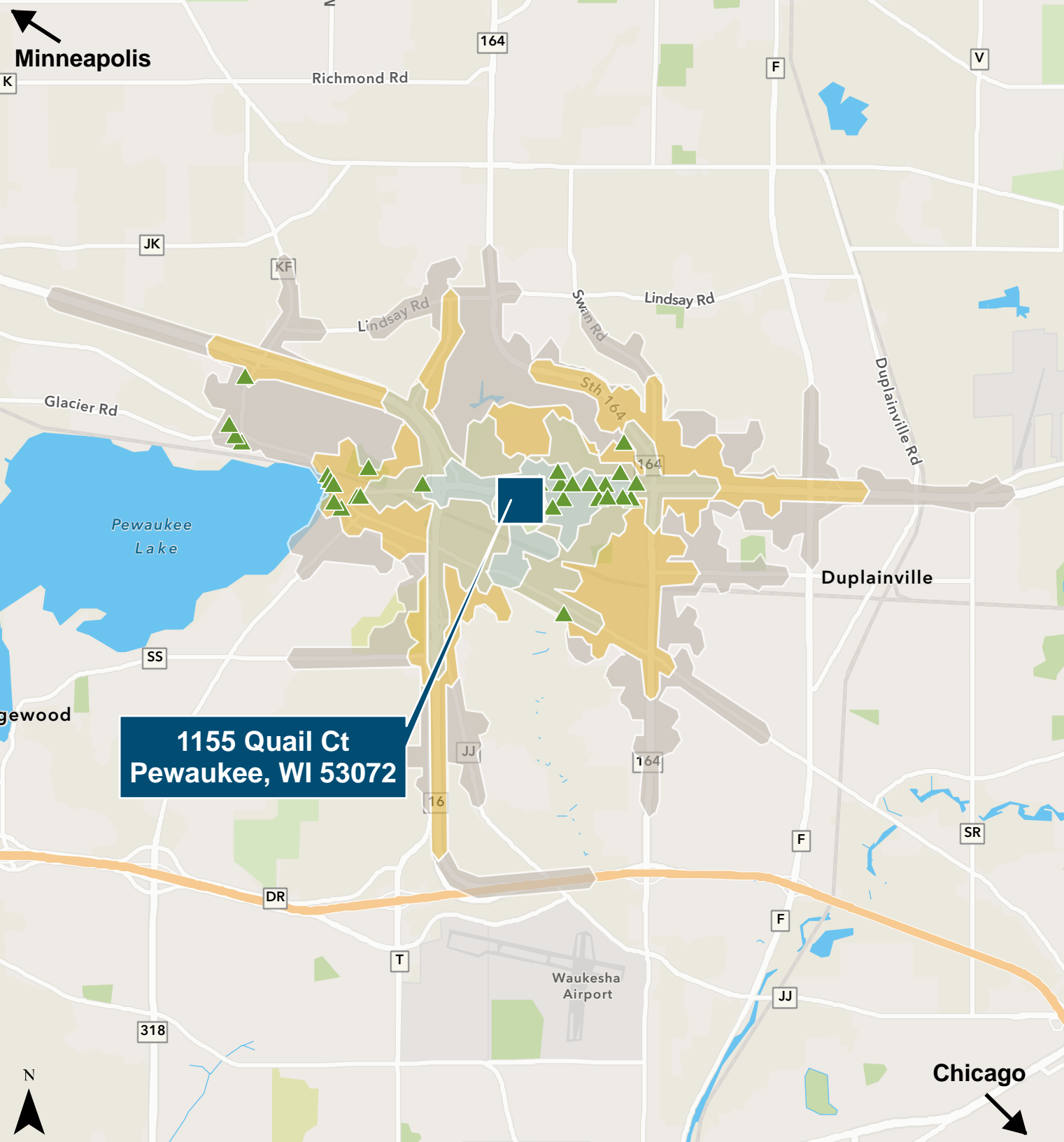


\$261,798

Median Net Worth

Source: U.S. Census Bureau. Esri forecasts





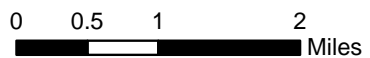
**1155 Quail Ct
Pewaukee, WI 53072**

Drive Times

- ≤ 1 Minute
- ≤ 2 Minutes
- ≤ 3 Minutes
- ≤ 4 Minutes
- ≤ 5 Minutes

Area Amenities *(Within Driving Distances)*

- ▲ Restaurants & Bars (44)



The information provided herein was obtained from sources believed reliable; however, Transwestern makes no guarantees, warranties or representations as to the completeness or accuracy thereof. The presentation of this property is submitted subject to errors, omissions, change of price or conditions, prior sale or lease, or withdrawal without notice.
Copyright © 2023 Transwestern.

1155

QUAIL COURT
PEWAUKEE, WI



SHAUN DEMPSEY

direct 414.270.4104

cell 414.699.7674

shaun.dempsey@transwestern.com



TRANSWESTERN

REAL ESTATE
SERVICES

310 W. Wisconsin Ave., Ste. ME110
Milwaukee, WI 53203

DISCLOSURE TO NON-RESIDENTIAL CUSTOMERS

1 Prior to negotiating on your behalf the brokerage firm, or an agent associated with the firm, must provide you the
2 following disclosure statement:

3 **DISCLOSURE TO CUSTOMERS** You are a customer of the brokerage firm (hereinafter Firm). The Firm is either an agent
4 of another party in the transaction or a subagent of another firm that is the agent of another party in the transaction. A
5 broker or a salesperson acting on behalf of the Firm may provide brokerage services to you. Whenever the Firm is
6 providing brokerage services to you, the Firm and its brokers and salespersons (hereinafter Agents) owe you, the
7 customer, the following duties:

8 (a) The duty to provide brokerage services to you fairly and honestly.

9 (b) The duty to exercise reasonable skill and care in providing brokerage services to you.

10 (c) The duty to provide you with accurate information about market conditions within a reasonable time if you request
11 it, unless disclosure of the information is prohibited by law.

12 (d) The duty to disclose to you in writing certain Material Adverse Facts about a property, unless disclosure of the
13 information is prohibited by law (see lines 42-51).

14 (e) The duty to protect your confidentiality. Unless the law requires it, the Firm and its Agents will not disclose your
15 confidential information or the confidential information of other parties (see lines 23-41).

16 (f) The duty to safeguard trust funds and other property held by the Firm or its Agents.

17 (g) The duty, when negotiating, to present contract proposals in an objective and unbiased manner and disclose the
18 advantages and disadvantages of the proposals.

19 Please review this information carefully. An Agent of the Firm can answer your questions about brokerage services,
20 but if you need legal advice, tax advice, or a professional home inspection, contact an attorney, tax advisor, or home
21 inspector. This disclosure is required by section 452.135 of the Wisconsin statutes and is for information only. It is a
22 plain-language summary of the duties owed to a customer under section 452.133(1) of the Wisconsin statutes.

23 **CONFIDENTIALITY NOTICE TO CUSTOMERS** The Firm and its Agents will keep confidential any information given to the
24 Firm or its Agents in confidence, or any information obtained by the Firm and its Agents that a reasonable person
25 would want to be kept confidential, unless the information must be disclosed by law or you authorize the Firm to
26 disclose particular information. The Firm and its Agents shall continue to keep the information confidential after the
27 Firm is no longer providing brokerage services to you.

28 The following information is required to be disclosed by law:

29 1. Material Adverse Facts, as defined in Wis. Stat. § 452.01(5g) (see lines 42-51).

30 2. Any facts known by the Firm or its Agents that contradict any information included in a written inspection
31 report on the property or real estate that is the subject of the transaction.

32 To ensure that the Firm and its Agents are aware of what specific information you consider confidential, you may
33 list that information below (see lines 35-41) or provide that information to the Firm or its Agents by other means. At a
34 later time, you may also provide the Firm or its Agents with other Information you consider to be confidential.

35 **CONFIDENTIAL INFORMATION:** _____

36 _____

37 _____

38 **NON-CONFIDENTIAL INFORMATION** (the following information may be disclosed by the Firm and its Agents): _____

39 _____

40 _____

41 _____ (*Insert information you authorize to be disclosed, such as financial qualification information.*)

42 **DEFINITION OF MATERIAL ADVERSE FACTS**

43 A "Material Adverse Fact" is defined in Wis. Stat. § 452.01(5g) as an Adverse Fact that a party indicates is of such
44 significance, or that is generally recognized by a competent licensee as being of such significance to a reasonable
45 party, that it affects or would affect the party's decision to enter into a contract or agreement concerning a transaction
46 or affects or would affect the party's decision about the terms of such a contract or agreement.

47 An "Adverse Fact" is defined in Wis. Stat. § 452.01(1e) as a condition or occurrence that a competent licensee
48 generally recognizes will significantly and adversely affect the value of the property, significantly reduce the structural
49 integrity of improvements to real estate, or present a significant health risk to occupants of the property; or information
50 that indicates that a party to a transaction is not able to or does not intend to meet his or her obligations under a
51 contract or agreement made concerning the transaction.

52 **NOTICE ABOUT SEX OFFENDER REGISTRY** You may obtain information about the sex offender registry and persons
53 registered with the registry by contacting the Wisconsin Department of Corrections on the Internet at
54 <http://www.doc.wi.gov> or by telephone at 608-240-5830.

No representation is made as to the legal validity of any provision or the adequacy of any provision in any specific transaction.
Copyright © 2016 by Wisconsin REALTORS® Association
Drafted by Attorney Debra Peterson Conrad