




4200

BALLSTON QUARTER

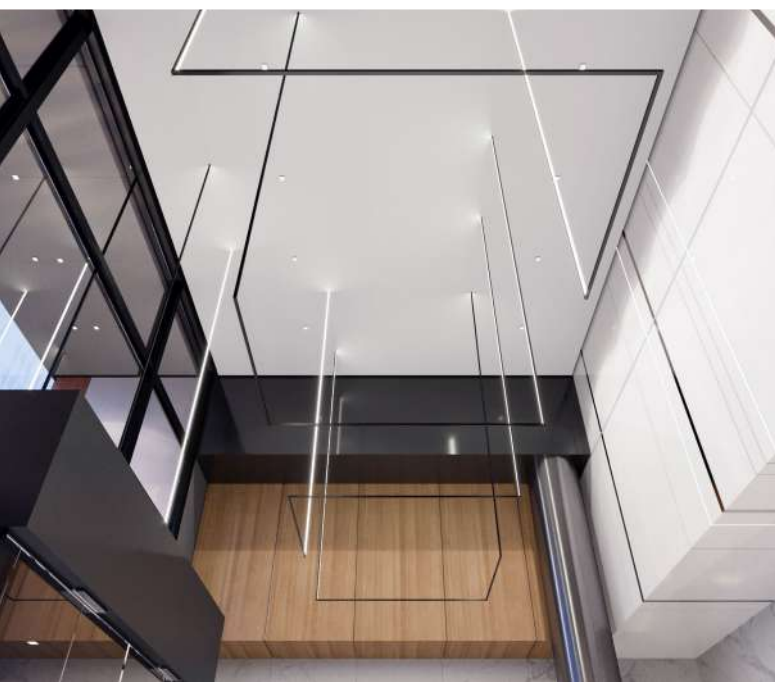
 TRANSWESTERN®

**Brookfield**  
Properties





REFINED & INVITING  
**LOBBY FINISHES & FURNITURE**





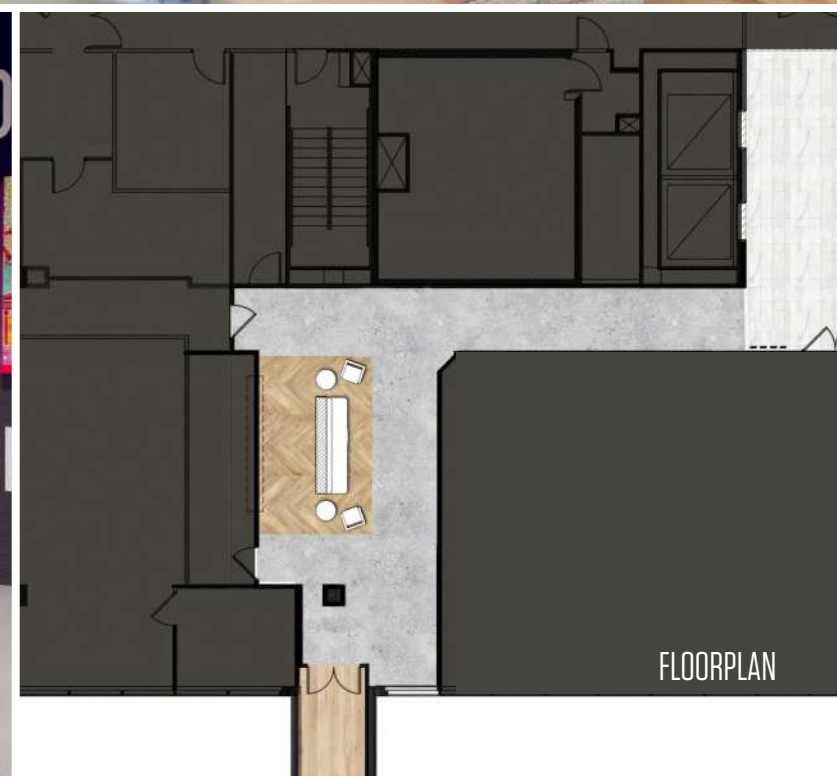


DIRECT & EASY ACCESS  
**TO AND FROM PARKING GARAGE**





LOUNGE SPACE



FLOORPLAN

# 4TH FLOOR SHARED AMENITY

WILSON BLVD



WINDOWLINE

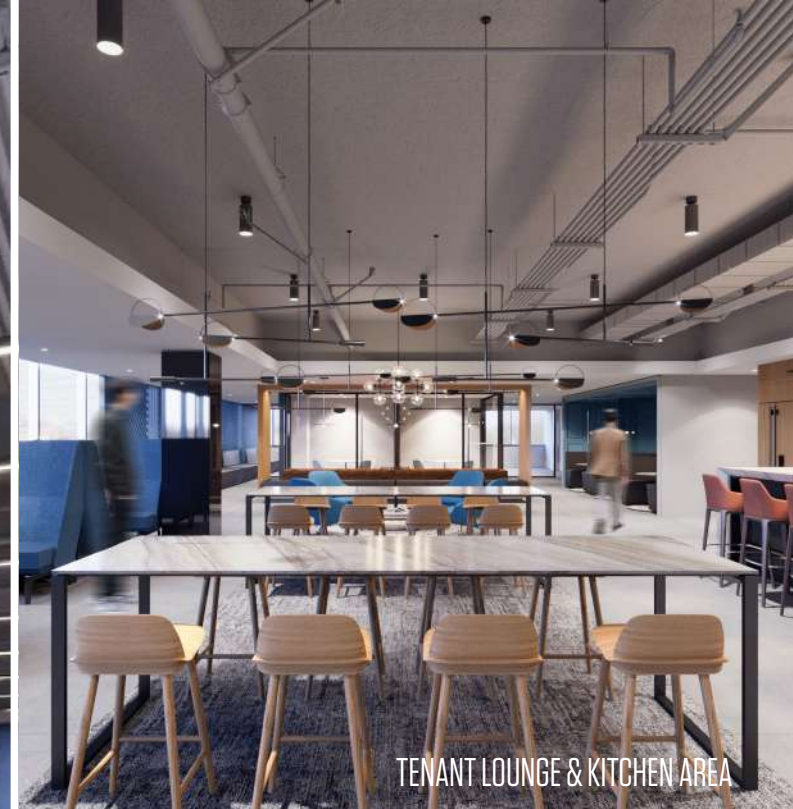


 TENANT LOUNGE AMENITY





SPEC SUITE WORK AREA



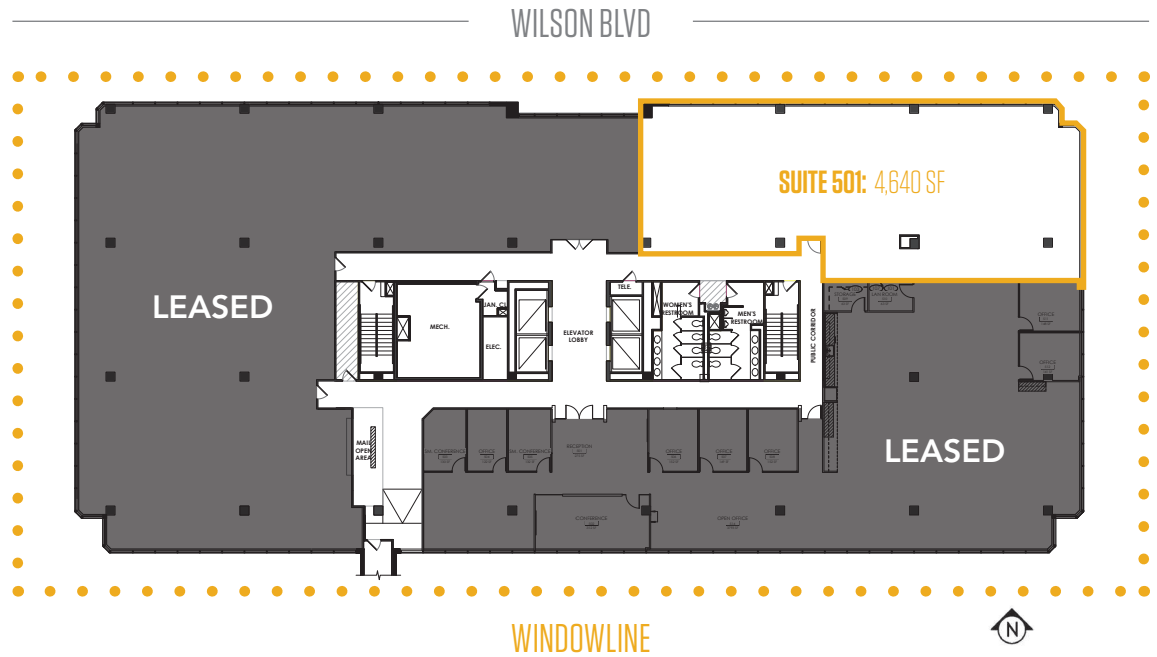
TENANT LOUNGE & KITCHEN AREA



SPEC SUITE RECEPTION & PANTRY

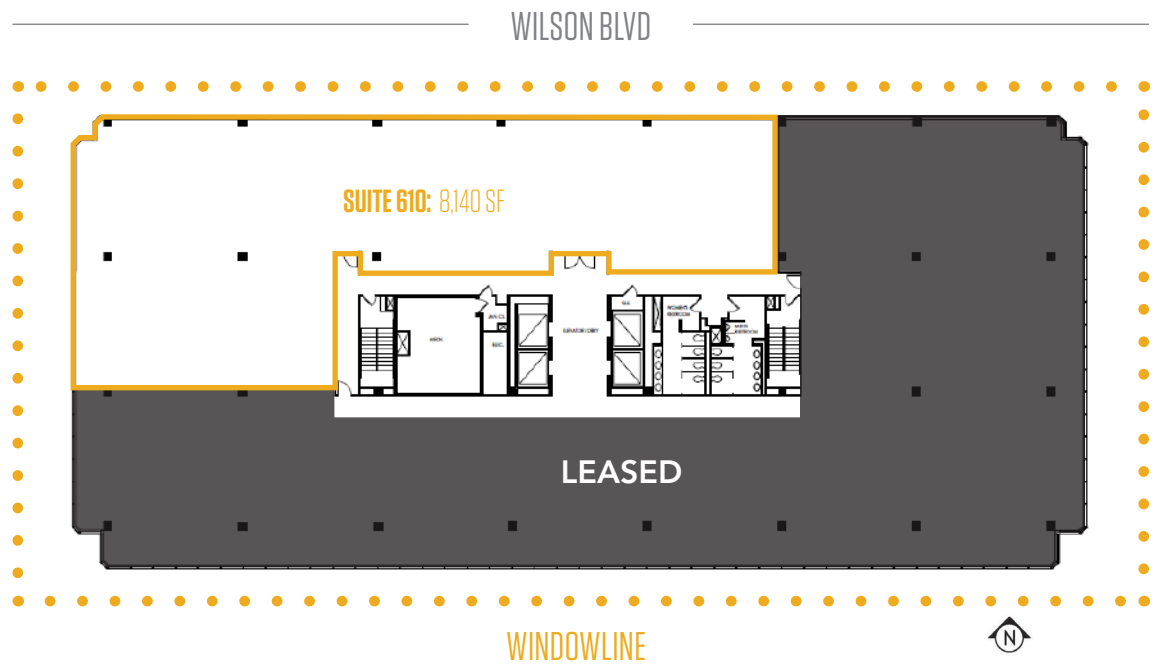
## 5<sup>th</sup> FLOOR

4,640 SF | AVAILABLE NOW



## 6<sup>th</sup> FLOOR

8,140 SF | AVAILABLE NOW





An architectural rendering of a modern building's entrance. The scene features a wide, paved walkway leading into a building. On the left, there are large glass windows reflecting the street. On the right, a wall is illuminated with a large, glowing number '42' and the word 'HUNDRED' in large, dark, three-dimensional letters. The ceiling is a dark, grid-like structure with recessed lighting. A person is visible in the distance at the end of the walkway, and another person is blurred in the foreground on the right, walking away from the camera. The overall atmosphere is clean, modern, and well-lit.

**DIRECT ACCESS TO & FROM  
RETAIL & RESTAURANTS**



## JUST A FEW OF THE UNLIMITED DINING OPTIONS



## FIRST CLASS FITNESS



## THE BEST OF ENTERTAINMENT/RETAIL







**Brookfield**  
Properties



1717 K Street NW, Suite 1000  
Washington, DC 20006

**BERNIE MCKEEVER, JR.**  
703 749 9462  
bernard.mckeever@transwestern.com

**ALEX HANCOCK**  
703 749 9435  
alex.hancock@transwestern.com

